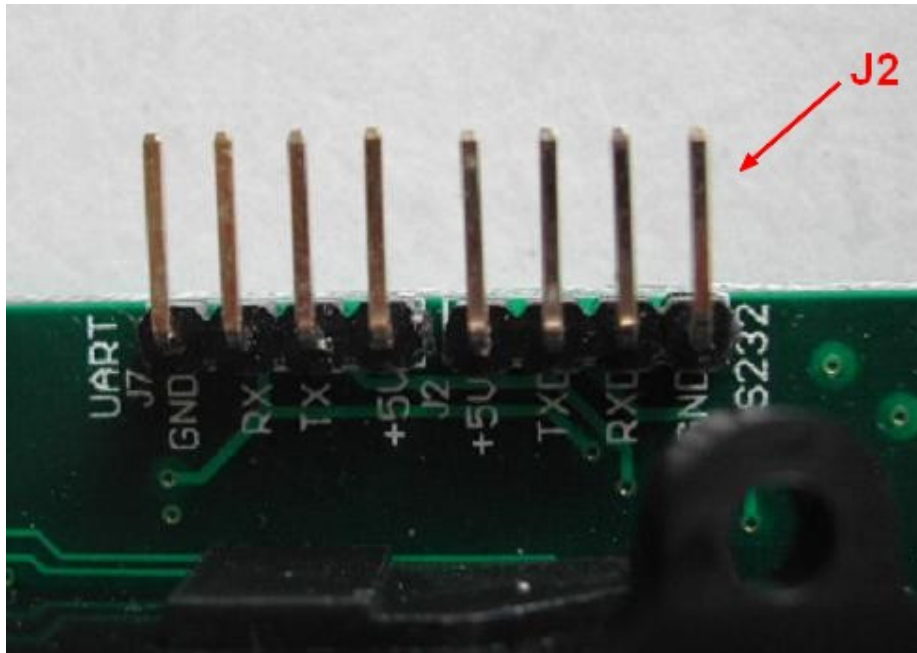


FS83 sFAM RS-232 connection to PC and Demo program

J2 of FS83 sFAM is for RS-232 connection



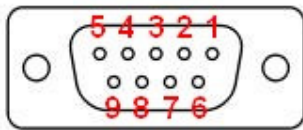
+5V = +5V power supply (can get this from +5V of USB port)

TXD = RS-232 Transmit of sFAM(connect it to pin 2 of Female DB9)

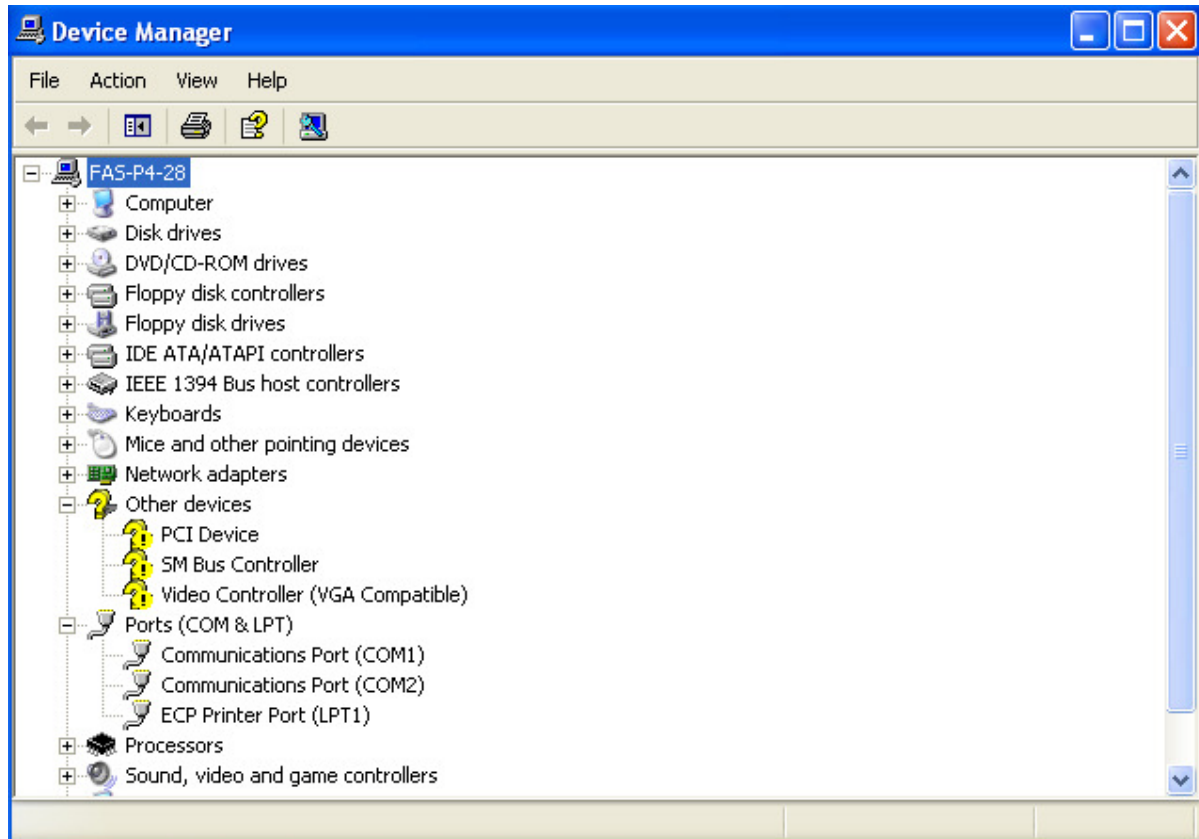
RXD = RS-232 Receive of sFAM(connect it to pin 3 of Female DB9)

GND = Ground (connect it to pin 5 of Female DB9 and the power ground of +5V supply)

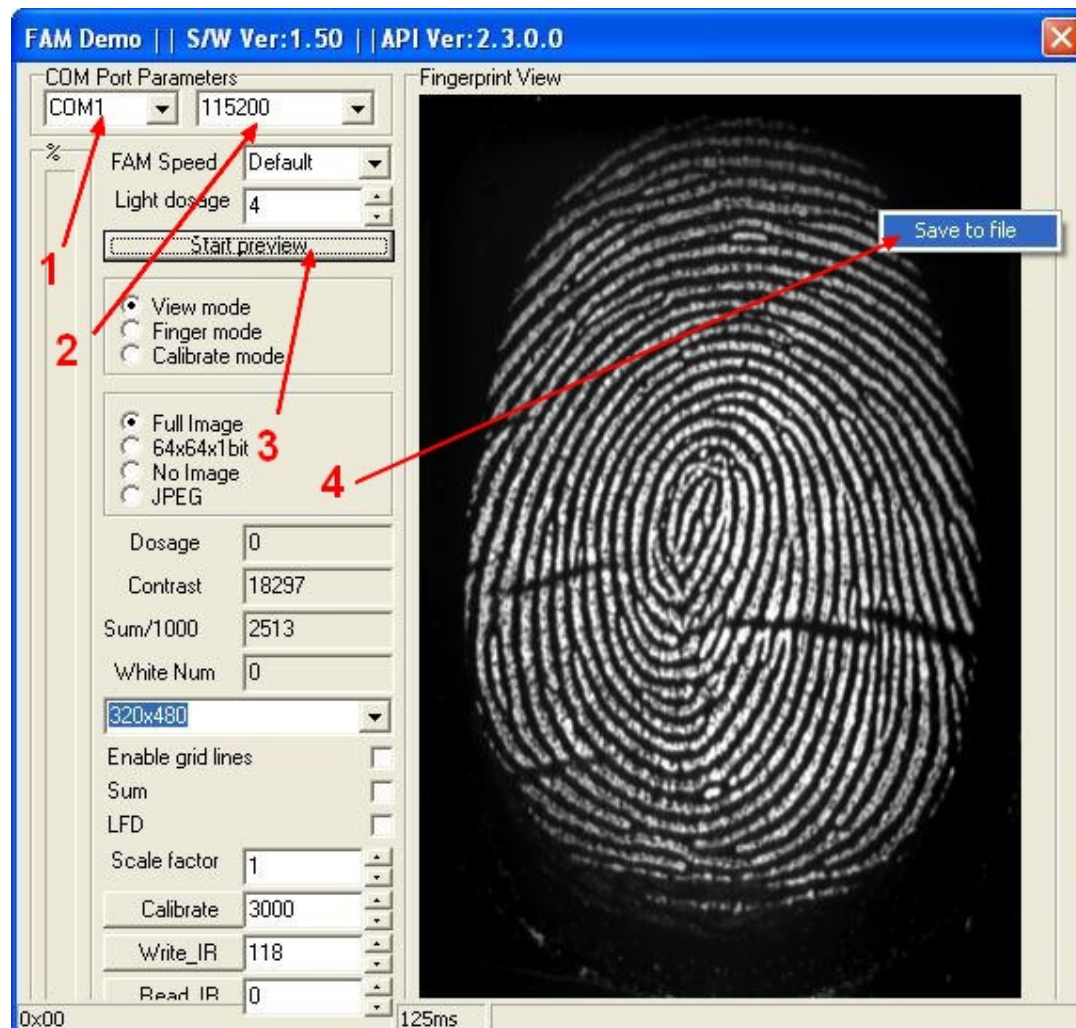
Female DB9 Connector



If you do not know what the COM port number is, you can go to Windows Device Manager and check.



Go to the folder “FS83 sFAM demo program” and run “fam.exe”. Then the following window will be showed.



Please do the following according the number in the above screen capture:

1. Use this pull down menu to select the correct COM port used.
2. Use this pull down menu to select COM port speed 115200 bit per second.
3. Put the finger on FS83 sFAM scanning window. Then press “Start preview” (The word “Start” will be changed to “Stop”) and hold the finger. A raw fingerprint image will be shown in the right hand side of the demo program window under the “Fingerprint View”. Press the “Stop” button will keep the fingerprint image in the window. (Sending image process will stop only after the whole image is sent. So, it will not stop immediately after press the “Stop” button. Please WAIT the program stop after you press “Stop” button ONCE.)
4. Then point to fingerprint image. Right click on mouse. “Save to file” will be shown. Press it and the BMP format fingerprint image (temp.bmp) will be stored to the C:\ of the PC.