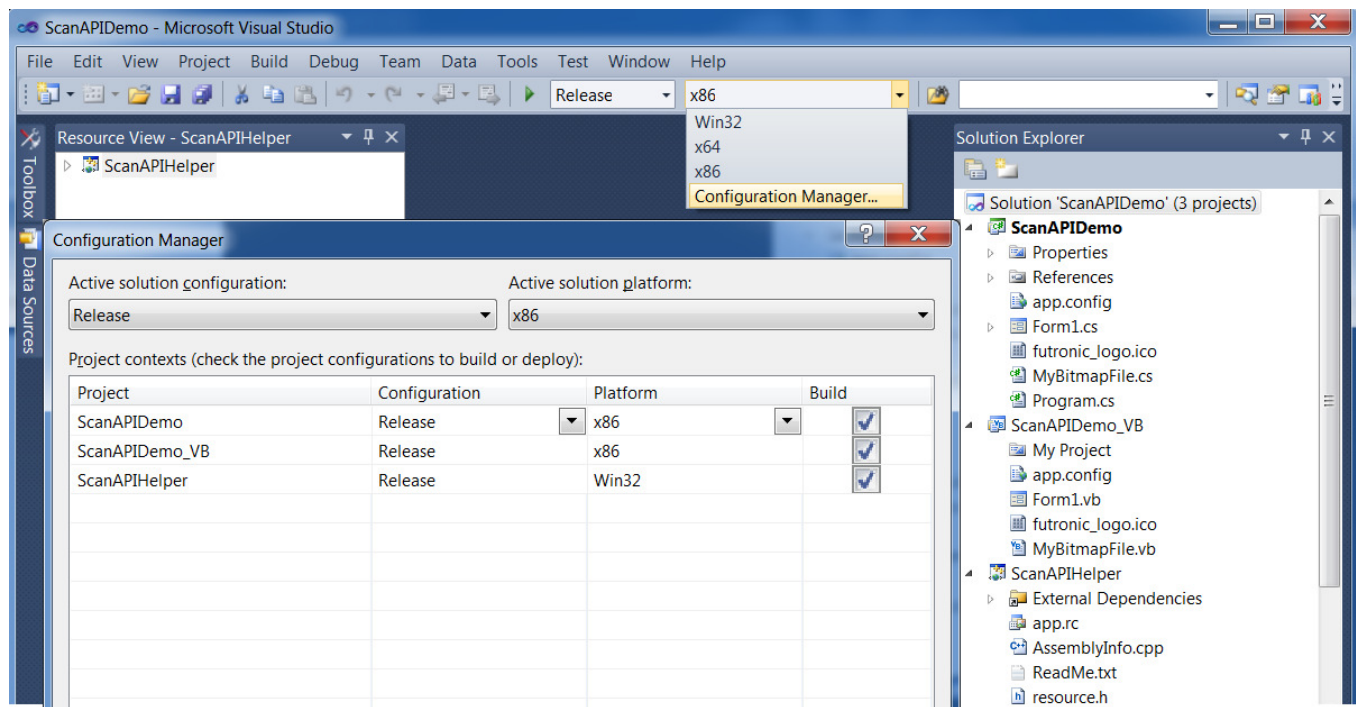


ScanAPI demo program for .NET

1. There are 3 projects in the VS solution
 - i. ScanAPIDemo (C# project)
 - ii. ScanAPIDemo_VB (VB project)
 - iii. ScanAPIHelper (VC++ project, helper to wrap the native ftrScanAPI.dll and ftrWSQ.dll)
2. In folder 'ScanAPIDemo', open 'ScanAPIDemo.sln' to open the solution with 3 projects
3. Set the 'Configuration Manager' as below:



- a. select the Active solution configuration (release or debug)
 - b. select the Active solution platform (x86 or x64)
 - x86 (can work on 32bit and 64bit OS)
 - ScanAPIDemo project and ScanAPIDemo_VB project should be set to 'x86'
 - ScanAPIHelper project should be set to 'Win32'
 - x64 (can work on 64bit OS only)
 - ScanAPIDemo project and ScanAPIDemo_VB project should be set to 'x64'
 - ScanAPIHelper project should be set to 'x64'
4. Rebuild the solution
 5. Copy the native libraries 'ftrScanAPI.dll' and 'ftrWSQ.dll' to the 'bin' folder manually. You should copy the correct DLLs according to the platform (x86 or x64).
 6. Run the project.

The native libraries 'ftrScanAPI.dll' and 'ftrWSQ.dll' must be deployed with your application, it can be copied to the application folder or %SYSTEM32%.