

FUTRONIC TECHNOLOGY COMPANY LTD.

Futronic Logon Personal Edition

User's Guide Version 7.4

Copyright © 2003-2020 Futronic Technology Company Ltd.
All rights reserved

The software contains proprietary information of Futronic Technology Company Ltd.; it is provided under a license agreement containing restrictions on use and disclosure and is also protected by copyright law. Reverse engineering of the software is prohibited.

Due to continued product development this information is subject to change without notice. The information and intellectual property contained herein is confidential between Futronic Technology Company Ltd. and the client and remains the exclusive property of Futronic Technology Company Ltd. If you find any problems in the documentation, please report them to us in writing. Futronic Technology Company Ltd. does not warrant that this document is error-free.

No part of this publication may be reproduced, stored in a retrieval system, or transmitted in any form or by any means, electronic, mechanical, photocopying and recording or otherwise without the prior written permission of Futronic Technology Company Ltd.

All the product names mentioned in this Guide are trademarks or registered trademarks of their respective owners. Futronic Technology Company Ltd. acknowledges any and all rights of the trademarked companies.

Contents

Introduction	4
Requirements	5
Installation Instructions.....	6
Remove programs	10
Driver Installation.....	11
Getting Started.....	14
Finger Manager	17
Add user	18
User Properties	23
Manage Fingerprints	24
Per user Recognition quality setting	25
Settings.....	26
Delete User/Finger	28
Rename User	29
Advanced Security Settings.....	30
Import and Export the user/ fingerprint database	32
Export	33
Import.....	35
Domain User Logon	37
Add Finger/User Wizard.....	38
Logon Domain	40
Switch domain/workgroup.....	41
Change computer name.....	42
Dial-Up Networking.....	43
Terminal Services and Remote Desktop	45
Troubleshooting	48

Introduction

Thank you for buying Futronic Logon Software and fingerprint scanner. We present you an innovative product based on biometric technology, which is developed on the basis of the latest developments and advanced technologies in the field.

The Software enables computer users to identify themselves by using their biometric data (fingerprints) along with the standard Windows Logon procedure with user name and password.

Biometric identification enables quick access to the system without entering a password and ensures safety. Just put your finger on the fingerprint scanner, and the system will identify you, associate with your registration data and logon Windows. With this software, you will be able to strengthen your privacy and prevent unauthorized access to your computer.

Now your password cannot be stolen and your fingerprint cannot be falsified: it is guaranteed by our fingerprint recognition algorithm. For usual work you won't have to remember a password. In case you want ensured privacy, you can set a very long password because you won't have to enter it.

The Futronic Logon Personal Edition software provides fingerprint authentication function for Windows workstations. It enhances security and convenience to Windows logon by adding fingerprint authentication to the Windows logon procedure. Variety of security settings is available through Finger Manager administrative tool.

If you have any question about our product, please call 852-24087705 or email to inquiry@futronic-tech.com.

Requirements

This document will guide you through the installation of Futronic Logon Personal Edition for Windows.

Note: To install this product as described in this document, you will need:

- Processor: Intel Pentium processor (or compatible) or better
- RAM: 64 MB
- Screen Resolution: 16-bit color, 800x600 pixels
- Operating System: Windows XP/2003/Vista/2008/7/8/2012/8.1/10/2016/2019
- Disk Space: 100MB free
- 1 USB Port

You also need to be sure your account has administrator rights.

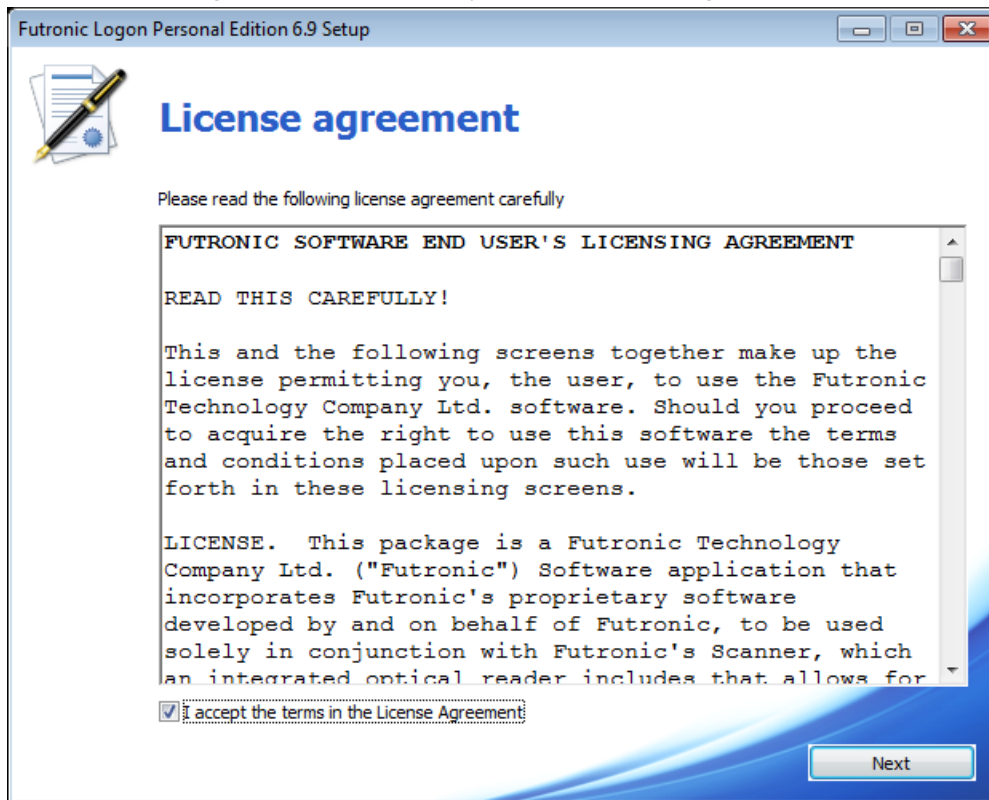
Installation Instructions

To install Futronic Logon Personal Edition:

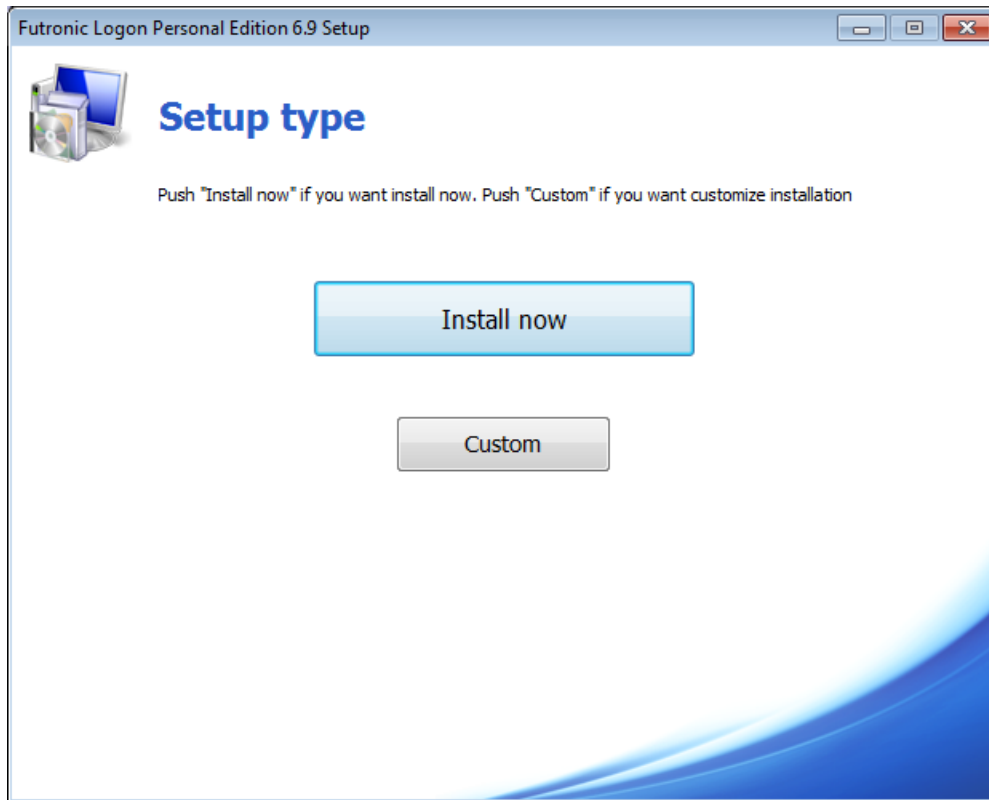
1. Navigate to your computer's download folder (*C:\Users\Your Username\Downloads* by default).
2. To start installation, launch the program **LogonPE.N.N.N.exe** and accept the Windows User Account Control (UAC) prompt, if applicable.



3. Read the license agreement, select I accept the terms of this agreement, and then click **Next**.



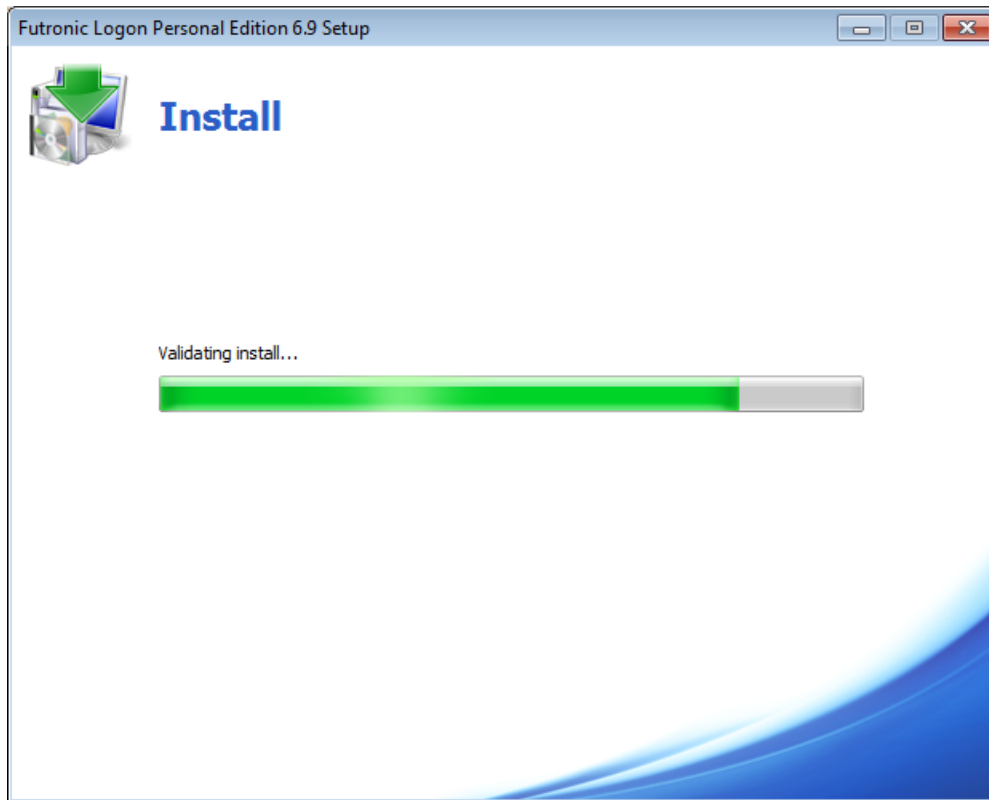
4. Click **Install Now**.



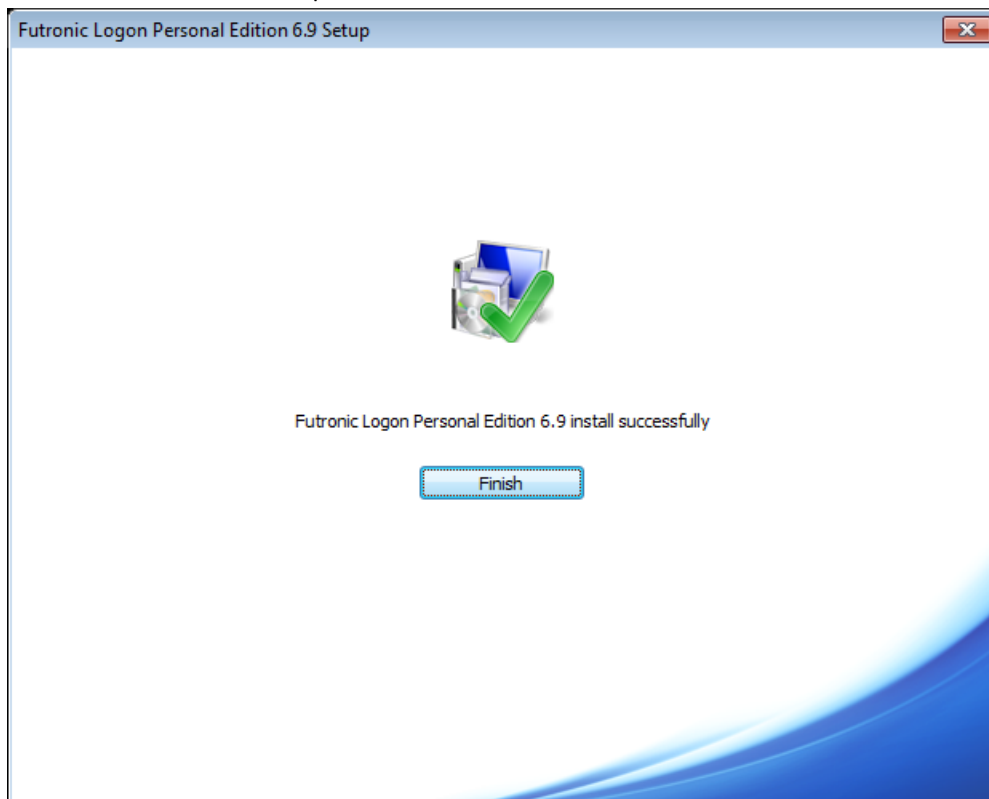
If you want to adjust the installation parameters, click **Custom** and specify:

- a. Futronic Logon components you are going to install.
- b. The path to the Futronic Logon components installation folder.
- c. The name of the Futronic Logon folder on the Start menu.

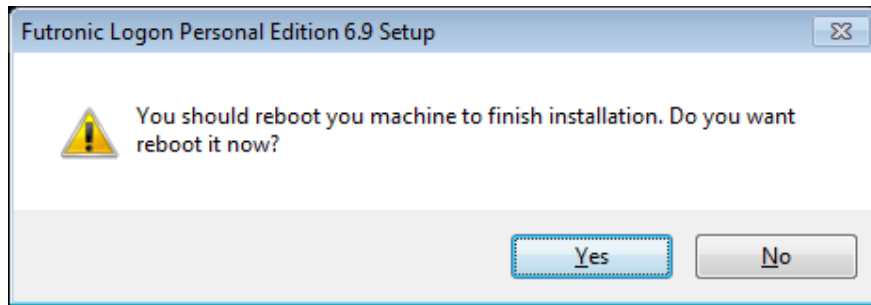
5. Wait while the software is installed.



6. Once the installation is complete, click **Finish**.



7. You should restart your computer. You can do that immediately or later.



After the restart of the computer, the installation is completed and you can start using the program.

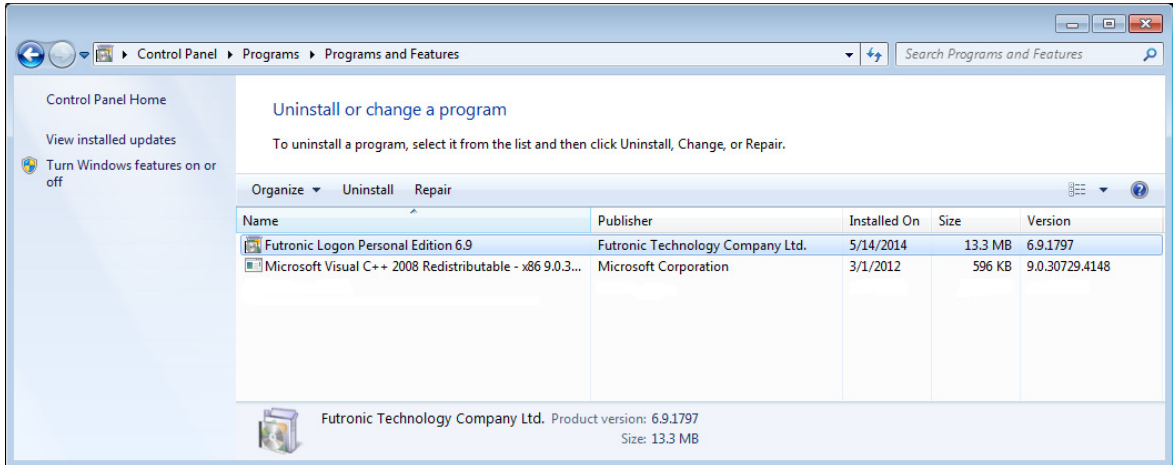
First of all, you should register users with the help of Finger Manager program included into the application. You can find instructions on the use of this program in the corresponding section of the manual.

At first time Restart after installation, you must press "Ctrl-Alt-Del" (if required) and then key in your user name and password to logon Windows.

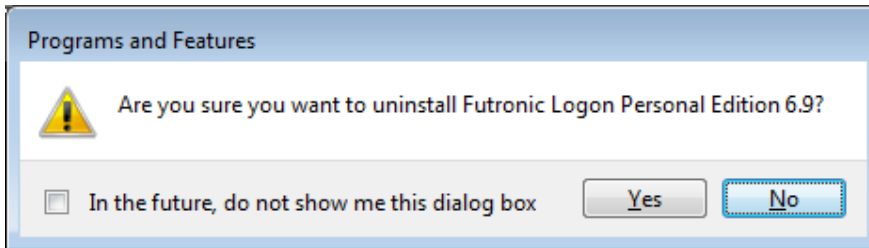
Remove programs

Windows 2003/XP: To remove the program, select the option Add/Remove Programs in the Windows control panel. Find Futronic Logon Personal Edition and press the Change/Remove button.

Windows Vista/2008/7/8/2012/8.1/10/2016/2019: To remove the program, select the option Programs and Features in the Windows control panel. Find Futronic Logon Personal Edition and press the Uninstall button.



After you have confirmed the operation, the program will be removed from the system.



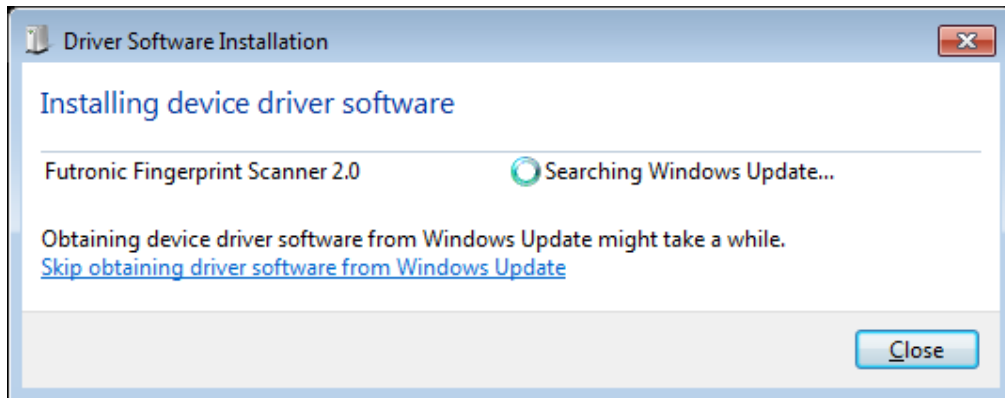
Now, to remove the application and all its features, you should restart your computer immediately or later.

Only the System Administrator can remove the Futronic Logon Software from Windows.

Driver Installation

As a biometric scanner has USB interface, it is not necessary to switch off the computer to connect the scanner. To connect the scanner, insert the USB-plug of the device into a free USB port of the computer.

When Windows detects a new device, the installation wizard will be launched. If the scanner has been installed earlier, Windows will find drivers automatically.

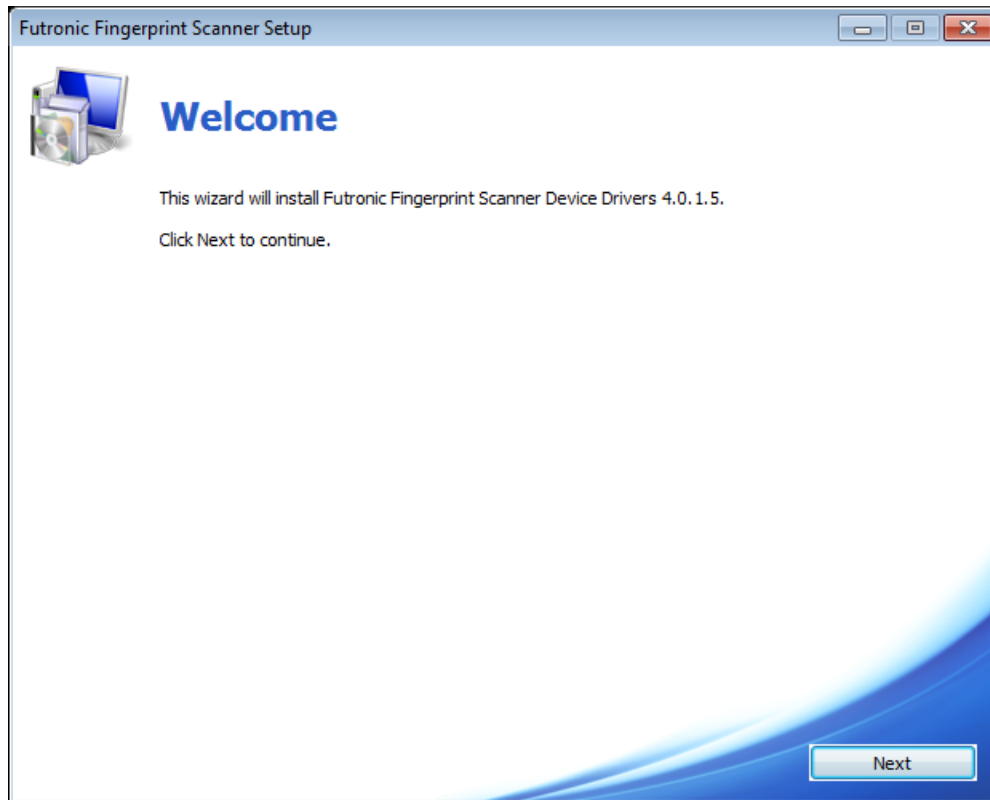


To install Futronic Fingerprint Scanner Device manually:

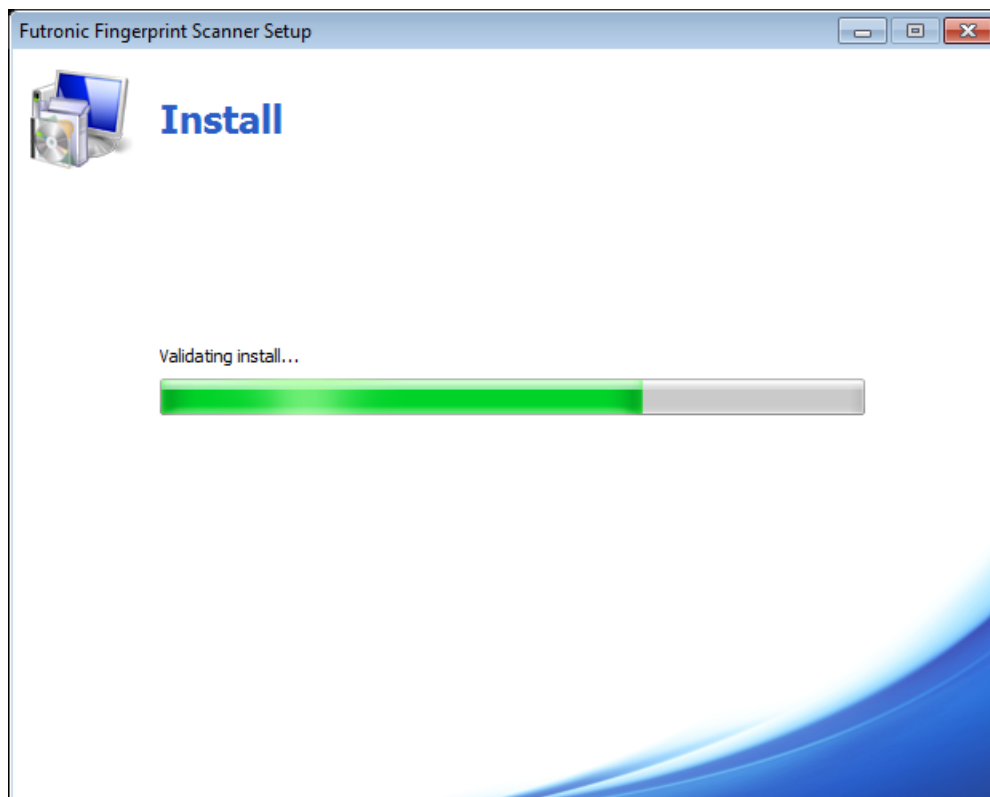
1. Navigate to your computer's download folder (*C:\Users\Your Username\Downloads* by default).
2. To start installation, launch the program **ftrDriverSetup_winxp_vista_win7_NN.exe** and accept the Windows User Account Control (UAC) prompt, if applicable.



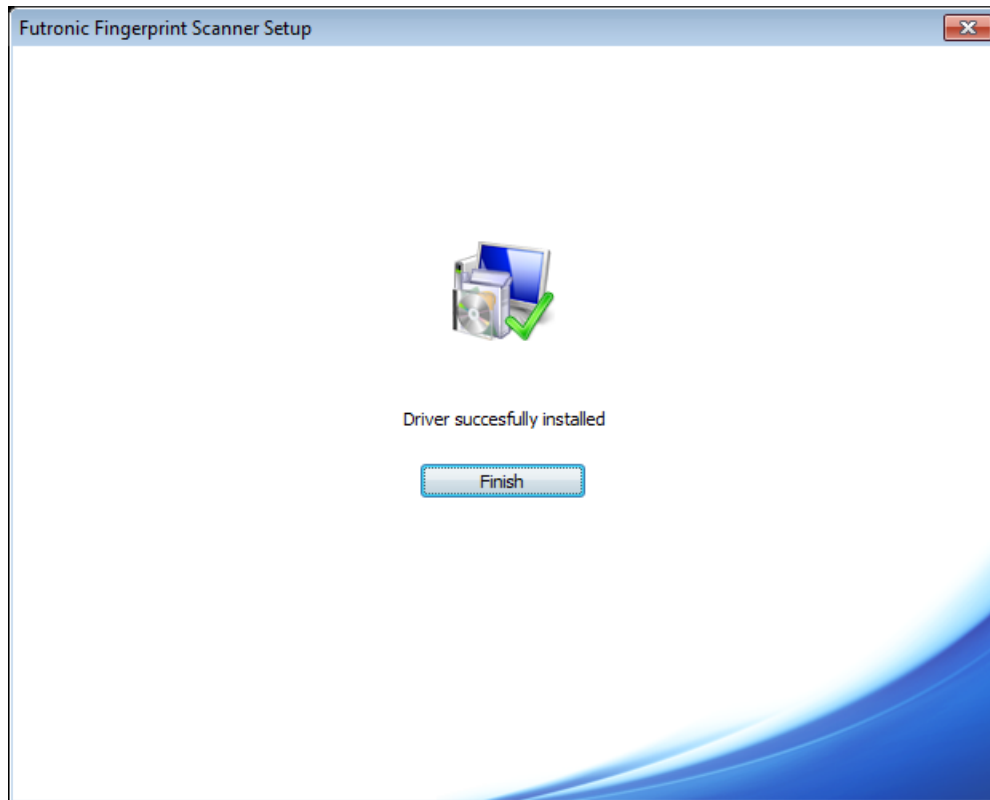
3. Click **Next**.



4. Wait while the software is installed.



5. Once the installation is complete, click **Finish**.



The USB driver installation can be done before or after the installation of Futronic Logon Software.

IMPORTANT NOTES:

Futronic will provide update drivers for the USB Fingerprint Scanner, for the new driver, it is necessary to restart OS and logon to the Windows to finish the driver updating, during the updating, the fingerprint scanner may not be used by the OS. So please take the following actions:

1. In the FingerManager.exe, do **NOT** set the "Authentication Options" to "Finger Only" or "Both Finger and Password" for the specific user.

Remember the Windows Logon Password, because you need to logon with password at the first time after restart.

Getting Started

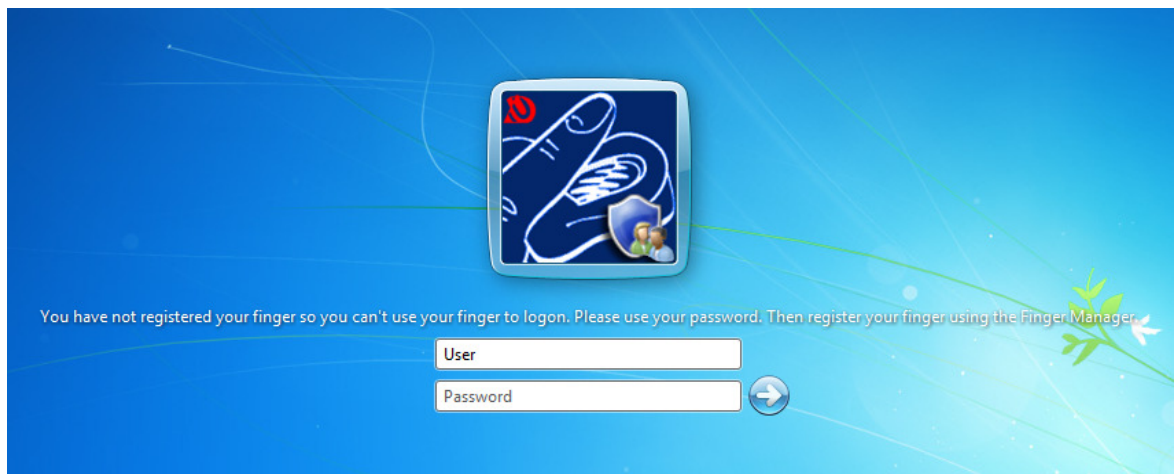
You have now installed the program and the USB fingerprint scanner's driver successfully. If you have not setup the driver yet, you can do it after the system restart. Instructions for driver installation are provided in the chapter "Driver Installation".

After restarting your computer, the program will ask you to press Ctrl-Alt-Del (if required) to logon Windows. If your fingerprint has not been added to the Finger Manager yet, you should press Ctrl-Alt-Del (if required) and use username and password to logon Domain/Windows.

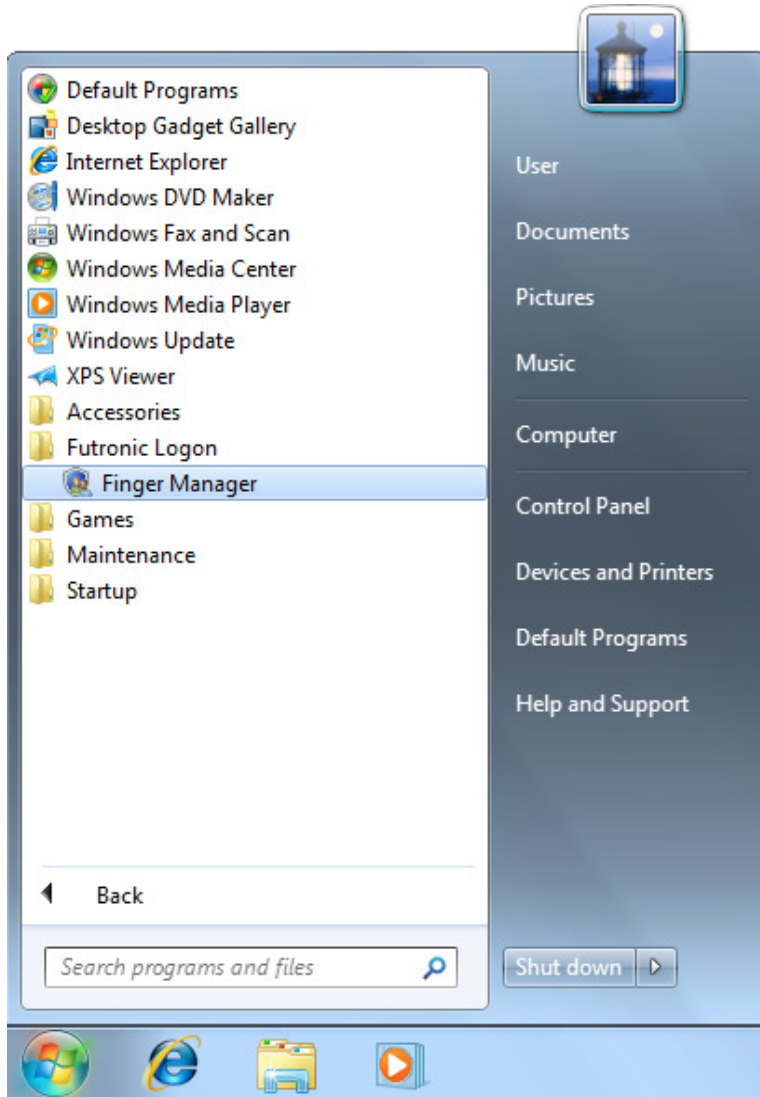
Windows XP view:



Windows 7 view:



To add the first user/finger, start up Finger Manager of the Futronic Logon. The shortcut is located in the menu *All Programs->Programs->Futronic Logon*:



But you must be logon as an administrator to run the Finger Manager.

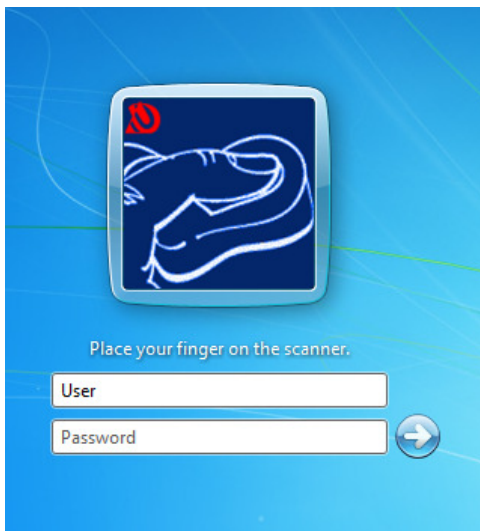
Instructions on Finger Manager are provided in the corresponding chapter of the manual.

After user/finger has been added in the Finger Manager, you can use your finger(s) instead of a password to logon Windows. Just Log off and wait for the welcome dialogue box and place your finger on the fingerprint scanner.

Windows XP view:



Windows 7 view:



If you have any problems, please go to the Section "Troubleshooting".

Hibernate, Stand by and Screen Saver

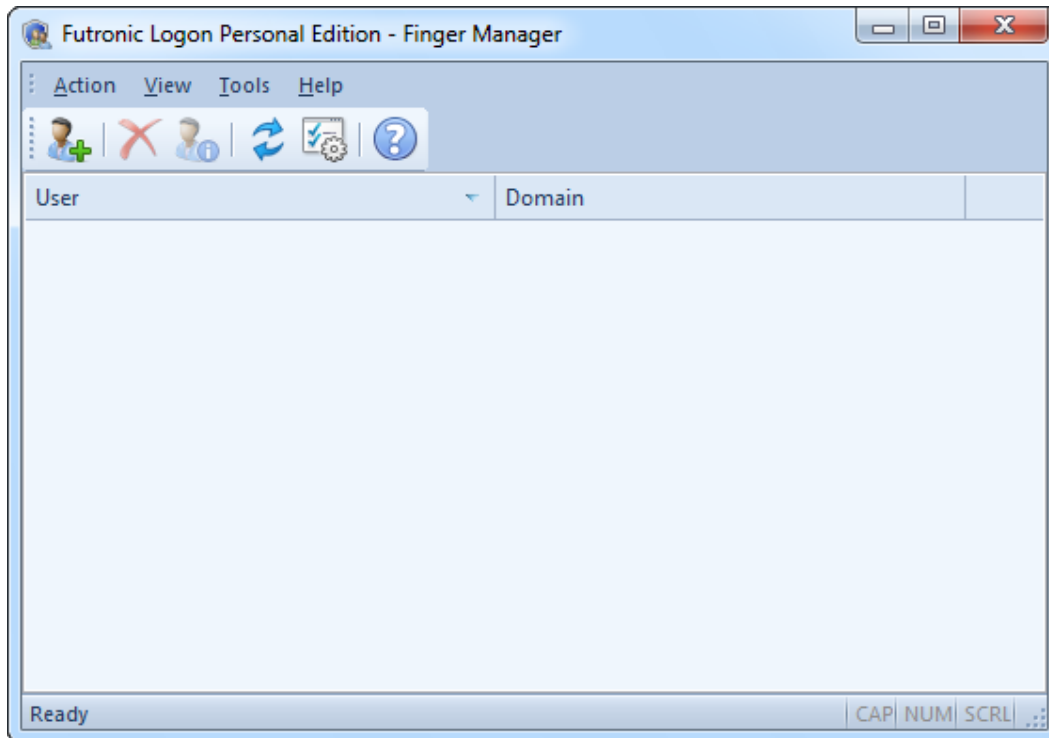
Futronic Logon Software also supports Hibernate, Stand by and Screen Saver with all the functions as that of Windows Logon. User will see the same dialogue box as that at Windows Logon when the system comes back from Hibernate, Stand by and Screen Saver. To activate Futronic Logon at Screen Saver, the option "*on resume, password protect*" option in the Screen Saver must be set.

Finger Manager

Finger Manager is an administrative tool supplied as part of the program. It is used to perform the following functions:

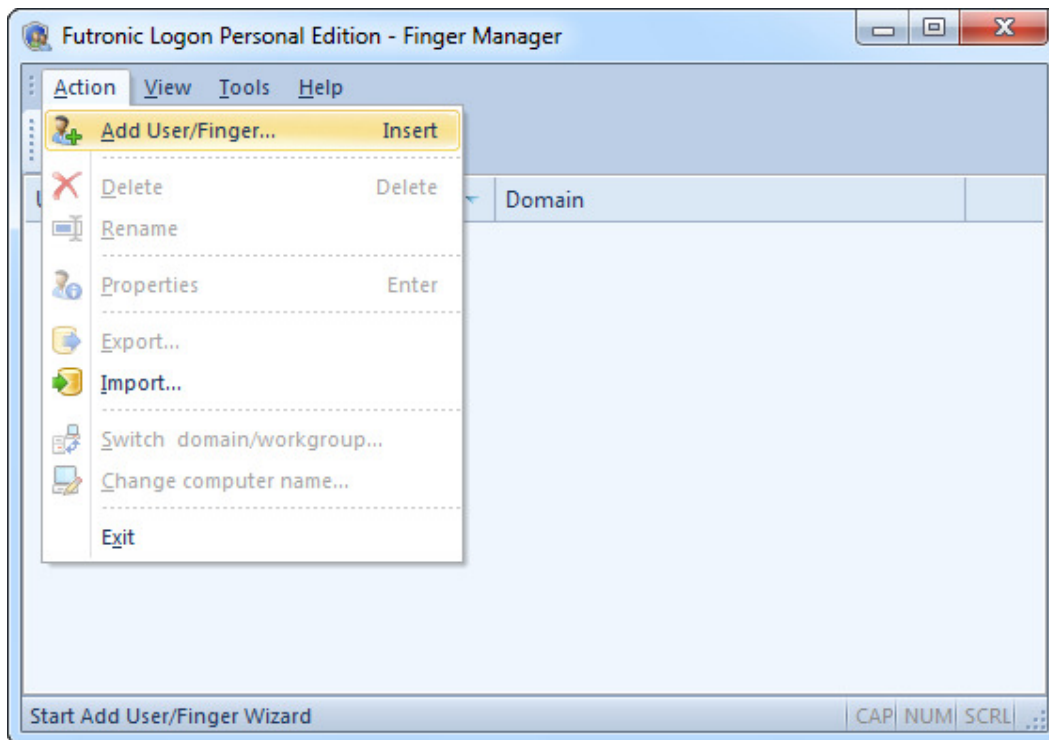
- to add or delete a domain user/finger;
- to check quality of user's fingerprints recognition;
- to change authentication options and program settings.

Only administrator can run the Finger Manager



Add user

To add a user choose in Action menu the option Add User and follow instructions.



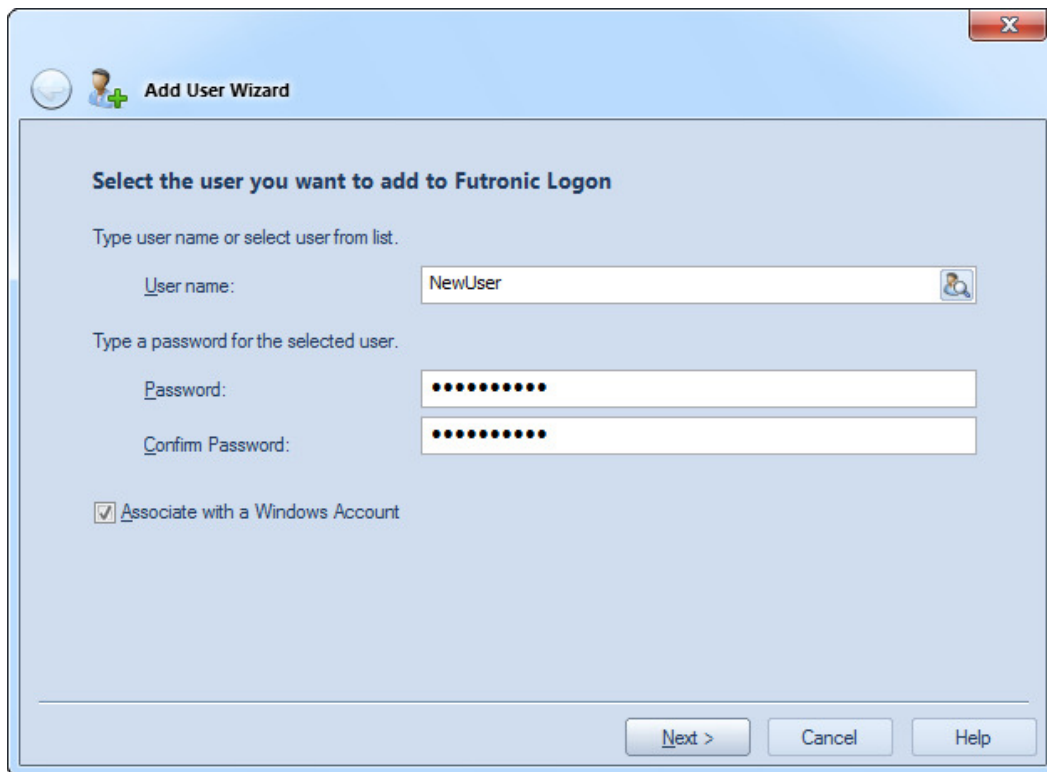
A new user is added with the help of the Wizard. The operation consists of several simple steps.

In Wizard's welcome press **"Next"**.

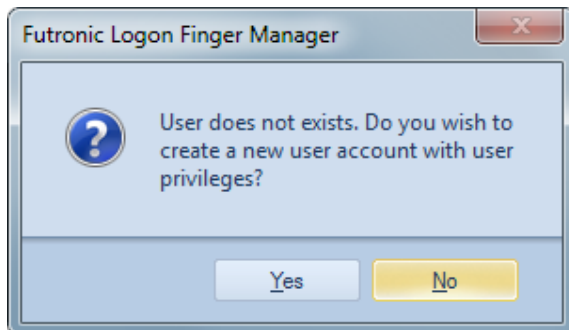
Enter user's login and password. They should correspond to the user's login and password in Windows.

Associate with a Windows Account - if this option is set, then the entered data will be checked. If the user has not been registered in Windows yet, you will be offered to create a new account. If the user has not been registered in Windows yet, then access under this login will be denied. This option allows to check whether a user has been registered or not and avoid mistakes in login and password.

After that, press **"Next"**.

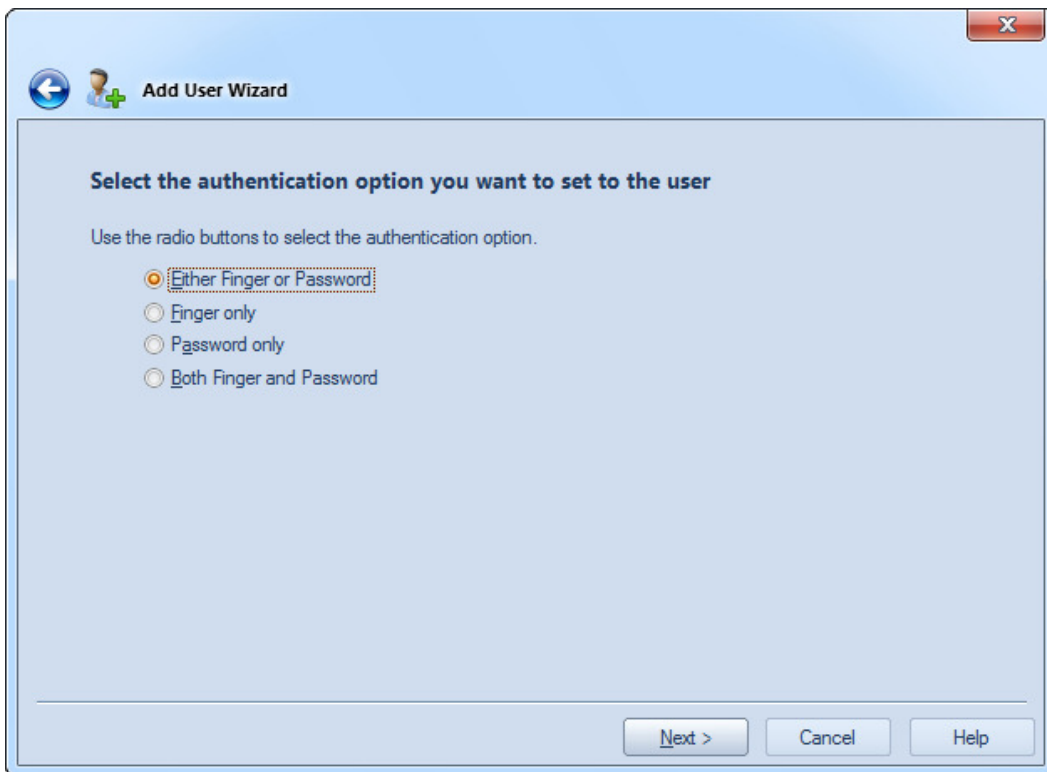


If there is no such user in Windows, you'll be asked to create it.



After that, press **"Next"**.

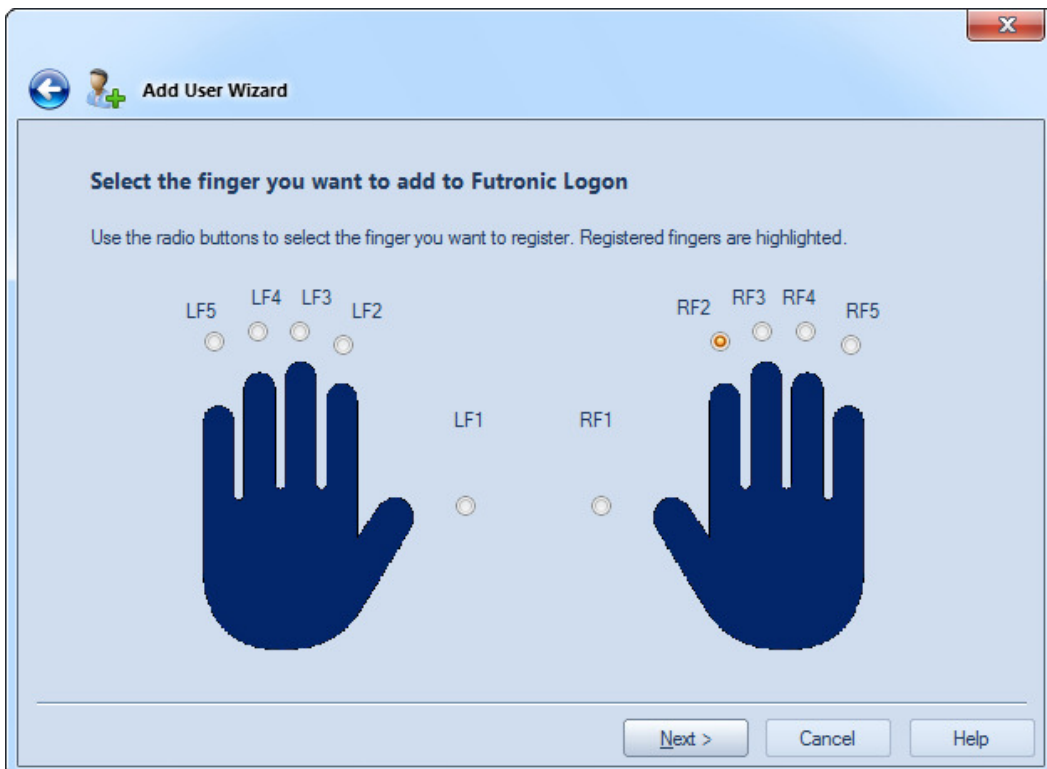
Now select authentication options for this user:



Select a finger that will be used for identification.

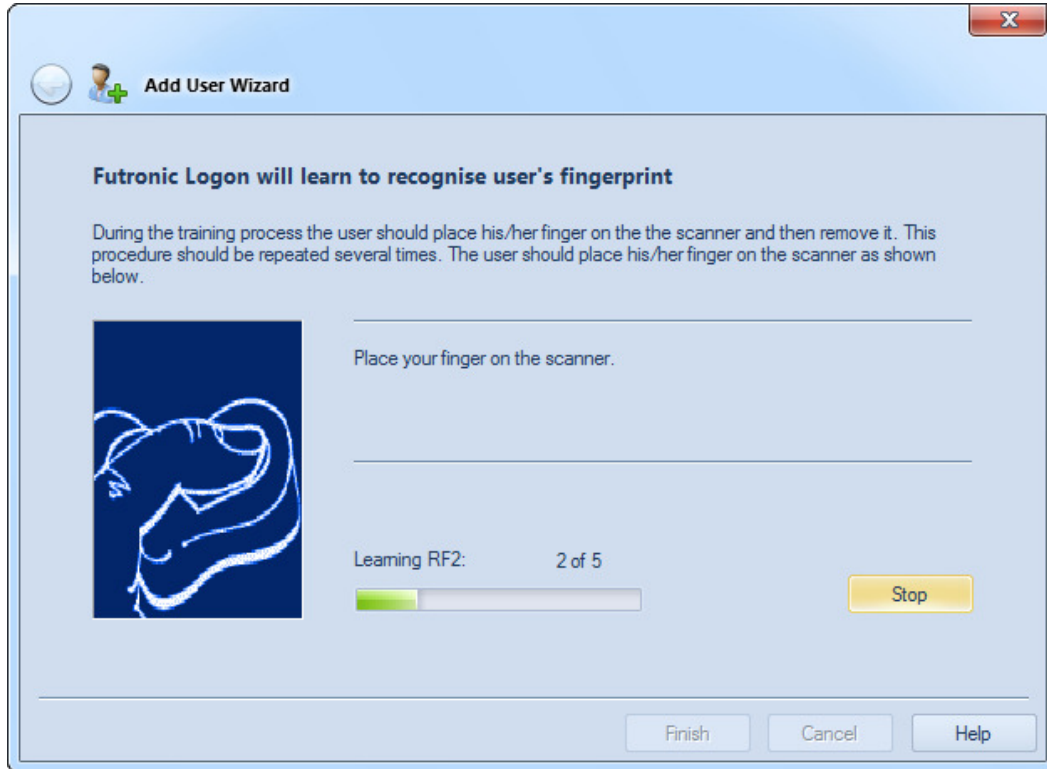
Fingers will be identified as RF1..RF5 and LF1..LF5, where RF or LF stand for the finger on the right or left hand. 1,2,3,4 and 5 indicate the number of the finger starting with the thumb.

Then press **"Next"**.



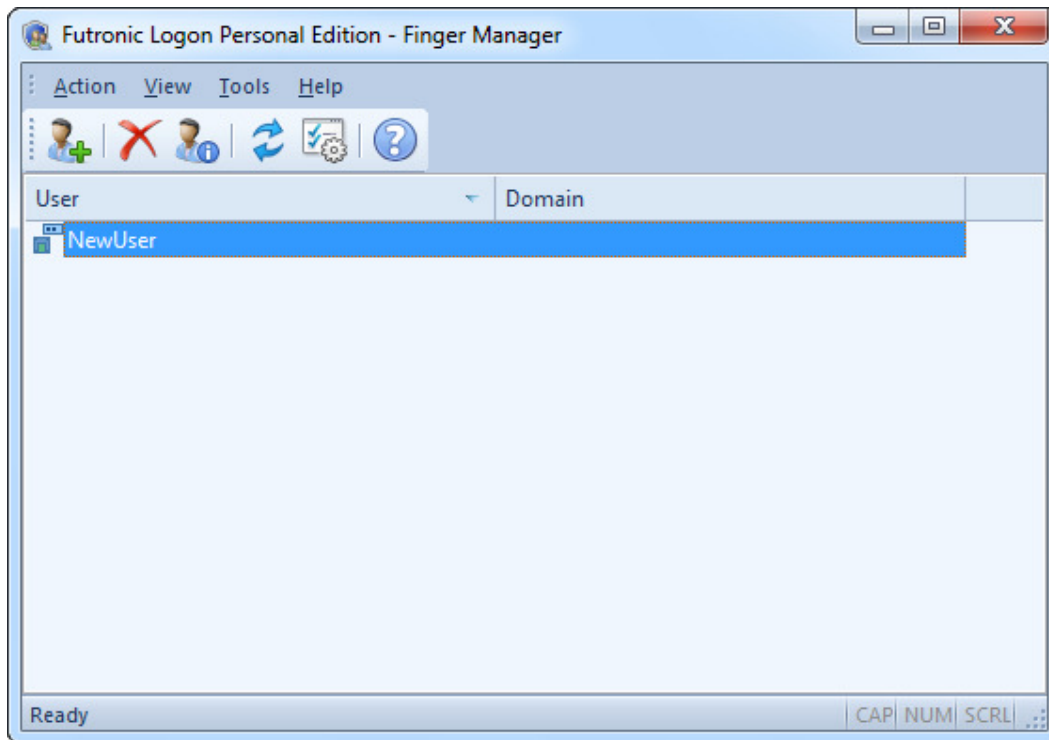
Now the program will learn to recognize user's fingerprint. Follow Wizard instructions and press your finger to the scanner's scanning window several times until the software takes enough samples.

Note: The Futronic Logon allows using one fingerprint for different domain users. In case there are several domain users associated with the finger pressed on the scanner, the software will ask you to select one of them to logon.



Press "**Finish**", the procedure of adding the new user/finger will complete.

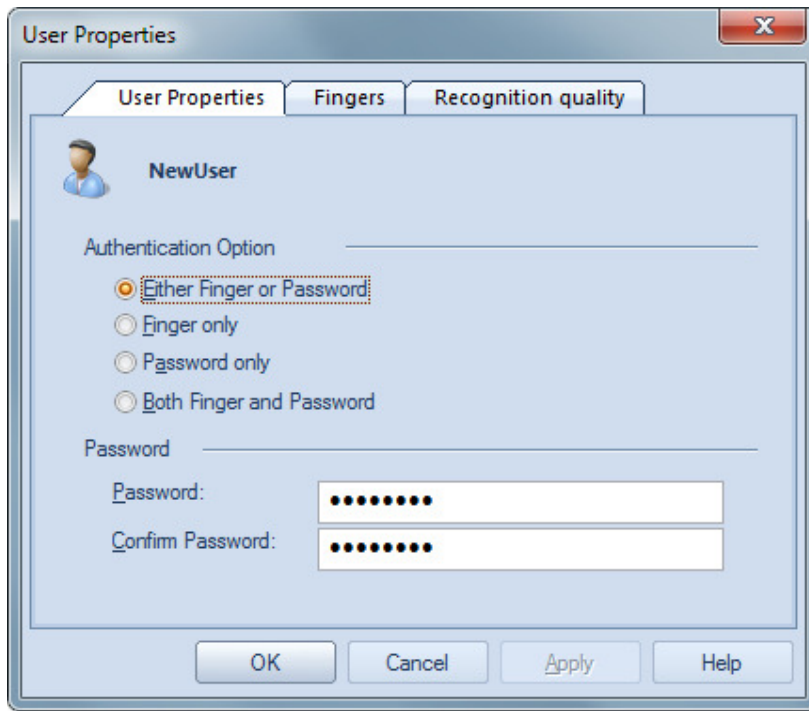
After the user/finger has been added, you can use your finger to logon.



You can add up to a maximum of 10 fingers for one user. To add more fingers for the same user, just repeat the Add User/Finger procedure but check a different finger in the "Select Finger" dialogue box below.

User Properties

To view or change user's authentication options, double click on the user/finger in the list or use the option "**Properties**" from "**Action**" menu.

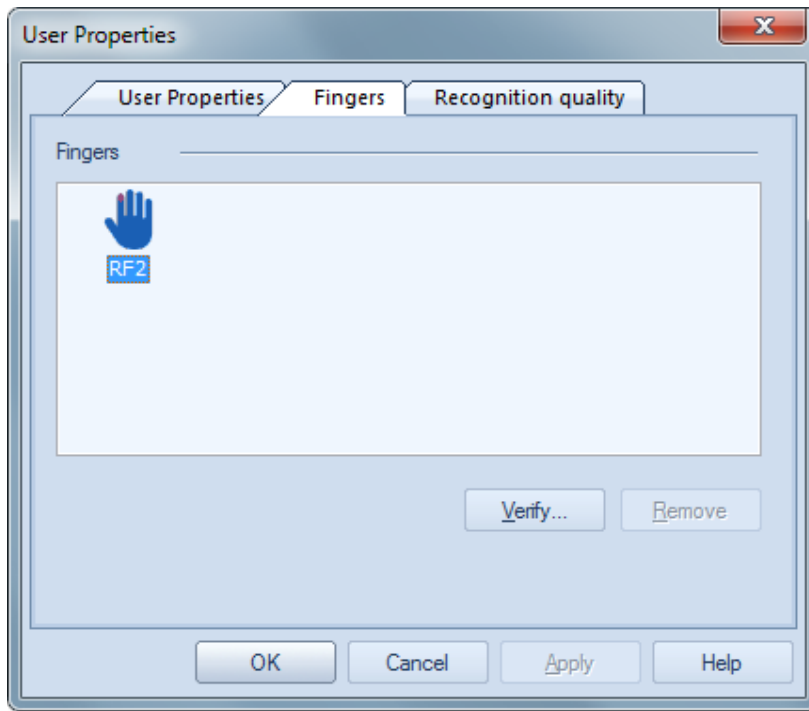


To change authentication option, select one of the following variants:

- Either Finger or Password - logon Windows either by fingerprint or password;
- Finger only - logon Windows only by fingerprint;
- Password only - logon Windows only by password;
- Both Finger and Password - a two-stage authentication. To logon Windows, it is necessary to enter fingerprint first, and then password.

Manage Fingerprints

To manage user fingerprints, double click on the user/finger in the list or use the option "**Properties**" from "**Action**" menu and go to the tab "**Fingers**"



To verify the added fingerprint, press "**Verify...**"

To remove the added fingerprint, press "**Remove**"

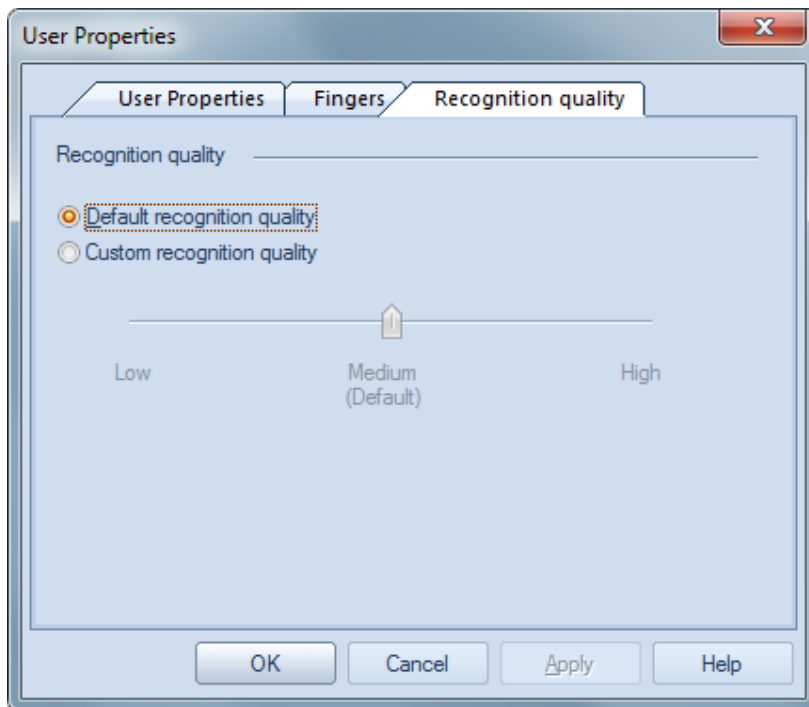
A dialogue window will pop up and ask you to put your finger on the scanner.

Then, you will be given identification result.

The added finger is showed in red color above the "**Verify...**" button. If inspection shows that the fingerprint does not match the finger, it should be removed and input again. Otherwise it will be impossible to enter Windows with this fingerprint.

Per user Recognition quality setting

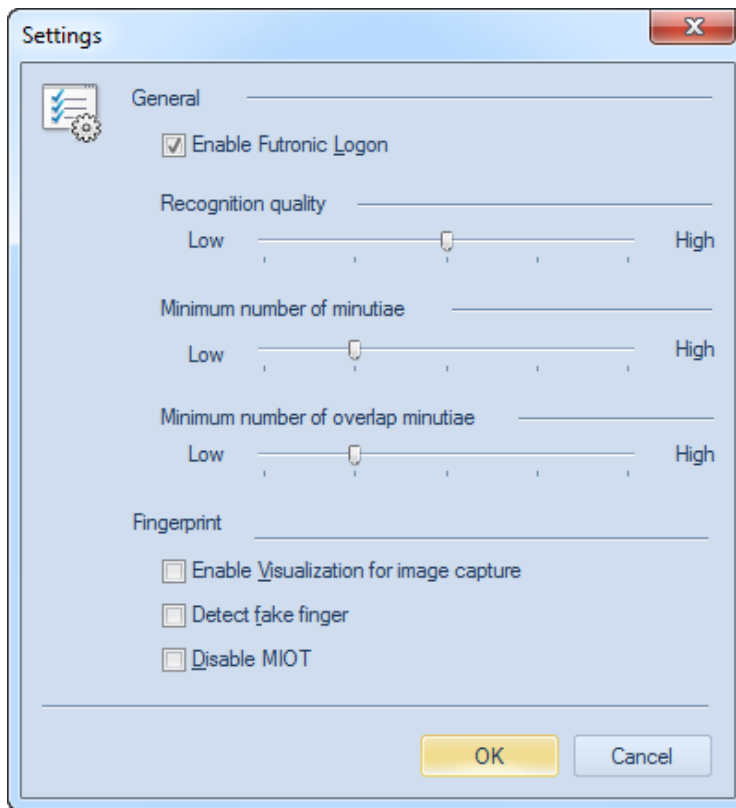
By default the recognition quality is set in the **"Settings"** from **"Tools"** menu (the **"default recognition quality"** button is checked). This is the global recognition quality for all users. If the **"custom recognition quality"** button is checked in the above dialogue box, the per user recognition quality can be selected. Then the fingerprint template of this particular user will be matched with a incoming fingerprint using the per user recognition quality. That is, the global recognition quality will not be used any more for this particular user.



This function is recommended to use for users who have "hard to recognized" fingers. So their recognition quality can be set to be lower than the global recognition quality to make them easier to be recognized but without affect other users.

Settings

To change or view program settings use the option "**Settings**" from "**Tools**" menu.



FAR - False Acceptance Ratio

FRR - False Rejection Ratio

Enable Futronic Logon - This is checked by default. Un-Check it will disable the Futronic Logon Software. You can still run Finger Manager but you will not be asked to present your finger at Windows Logon.

Recognition Quality - There are 5 levels. "High" is the most secure (low FAR and high FRR) and "Low" is the least secure (high FAR and low FRR). Default is Medium.

User with a "hard to recognize" finger should select a lower recognition quality for convenience. But user wants a highly secure system should select a higher recognition quality.

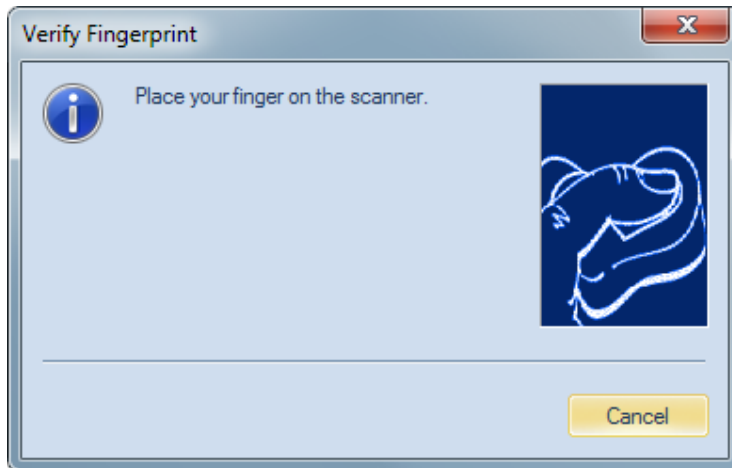
Minimum number of minutiae - level of the minimum minutiae number for enrolled template.

Minimum number of overlap minutiae - level of the minimum number of minutiae in overlapping area between comparing samples.

Enable Visualization for image capture - set this option if you want to view a user's fingerprint when adding or verifying it.

Detect fake finger - set this option if you want to enable it. This option must be used together with a latest model of Futronic fingerprint scanner.

If this option is enabled and the following message is shown when scanning finger,

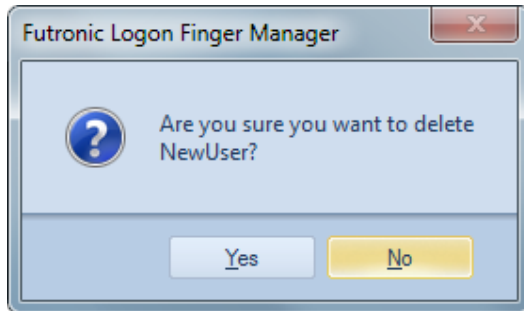


that means the finger put on the scanner is probably a fake finger. Or the finger does not put on the scanner properly. For the scanner to detect if a finger is "real" or "fake" properly, the finger must be put horizontally on the prism of scanner and the finger must be pressing on the scanner plastic shell right below the prism firmly.

Disable MIOT (Multifingers In One Template) - activate this option if you want the Finger Manager to check whether the user pressed the same finger to the scanner during finger registration.

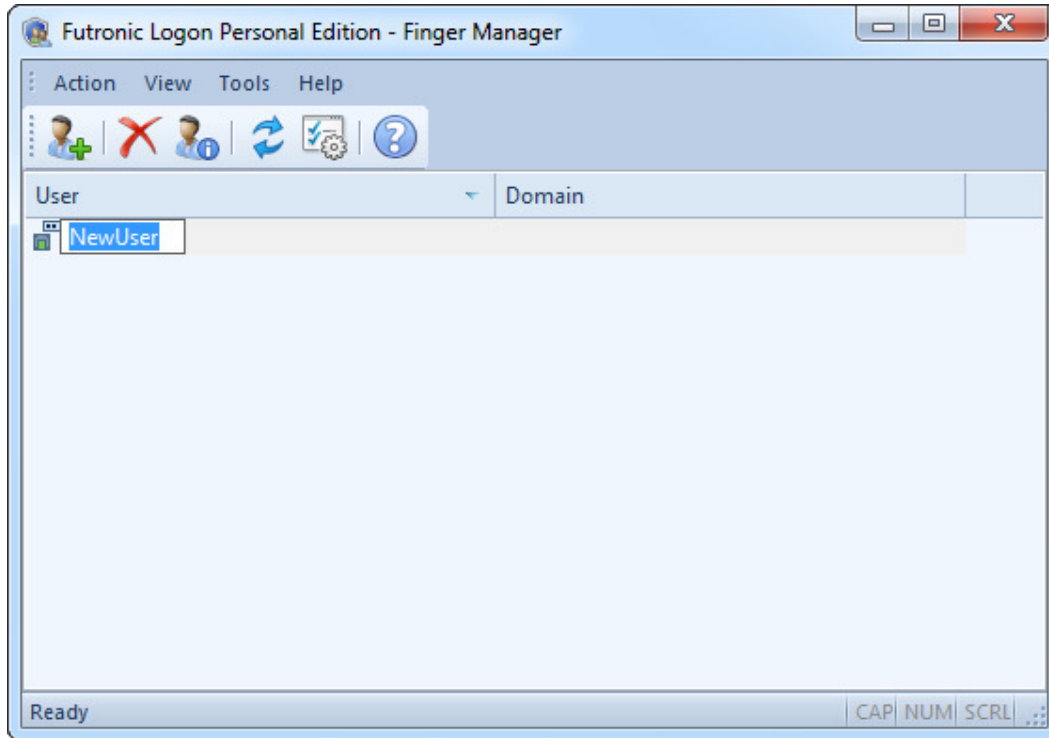
Delete User/Finger

To delete a selected user/finger choose "**Remove**" function from "**Action**" menu or press the button with the "red cross" in the tool bar. Please note that the domain user will be deleted only from the Finger Manager who will not be able to use finger to logon Domain but can still use password to logon as usual. In order to delete a user from Windows, use the Windows control panel.



Rename User

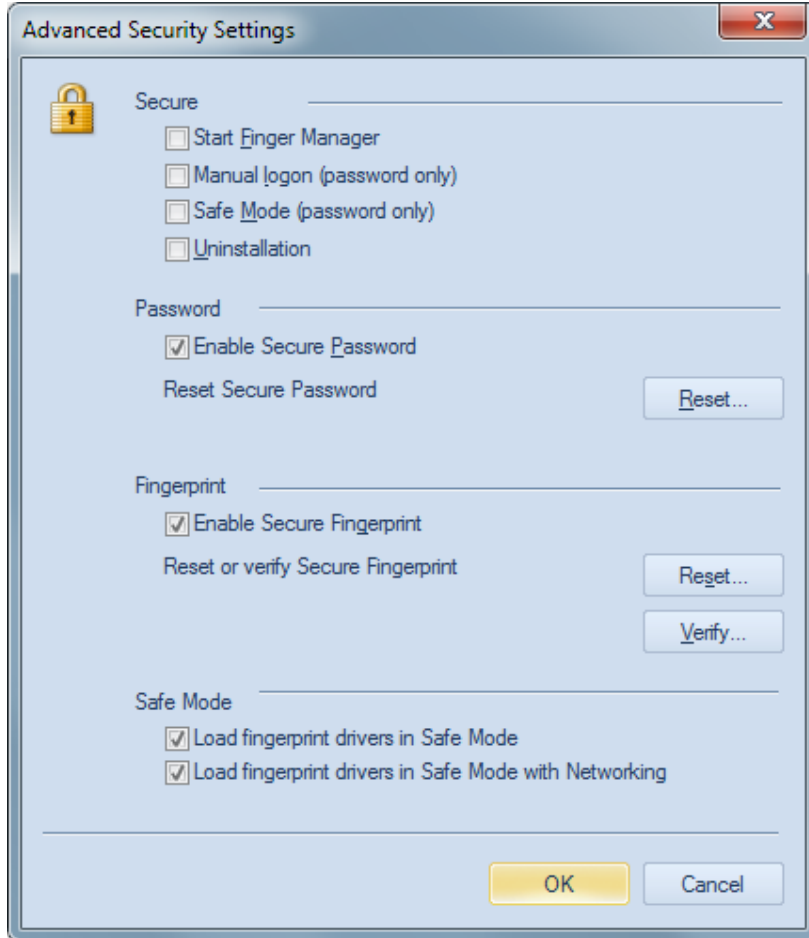
To rename a selected user choose **"Rename"** function from **"Action"**. Please, remember that the user will be renamed only in the application database. In order to rename a user in Windows, use the Windows control panel.



If the "real" user name of a Windows user account is changed in Windows' control panel, the user name in Finger Manager must also be changed by using the "Rename" function.

Advanced Security Settings

In order to enable Advanced Security Settings, you must enter your Secure Password and/or Secure Fingerprint by pressing the **"Reset"** button. The Secure Password and/or Secure Fingerprint can be changed any time by pressing the **"Reset"** button.



Then check the required boxes and save them by pressing OK button.

Start Finger Manager – if the option is set, the user must enter Secure Password or Secure Fingerprint to start Finger Manager;

Ctrl-Alt-Del - if this option is set, the user must enter Secure Password or Secure Fingerprint after pressing Ctrl-Alt-Del at Windows Logon. User can only use password to logon Windows after entering the correct Secure Password or Secure Fingerprint;

Safe Mode – if the option is set, the user must enter Secure Password in order to start Windows in the Safe Mode;

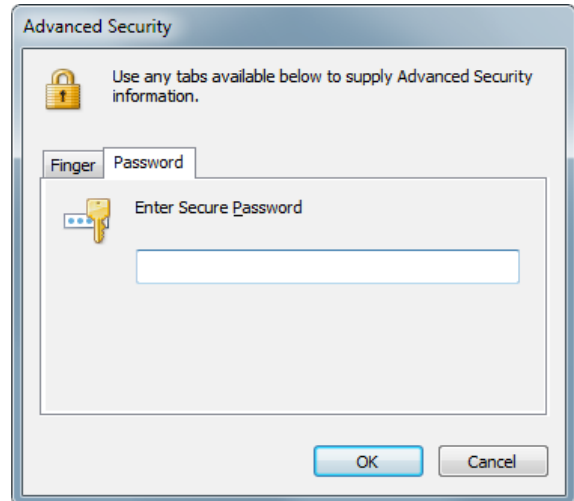
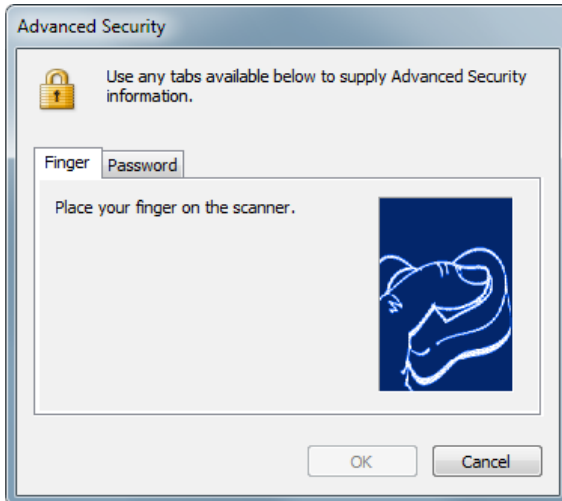
Un-installation - if the option is set, the user must enter Secure Password or Secure Fingerprint before un-installation of Futronic Logon Software.

The dialogue box of Futronic Advanced Security Settings contains three tabs:

1. Under "Password", use "Reset" tab to enter secure password.
2. Under "Fingerprint", use "Reset" tab to enter Secure Fingerprint
3. Under "Fingerprint", use "Verify " tab to verify Secure Fingerprint.

Request of Secure Password and Secure Fingerprint.

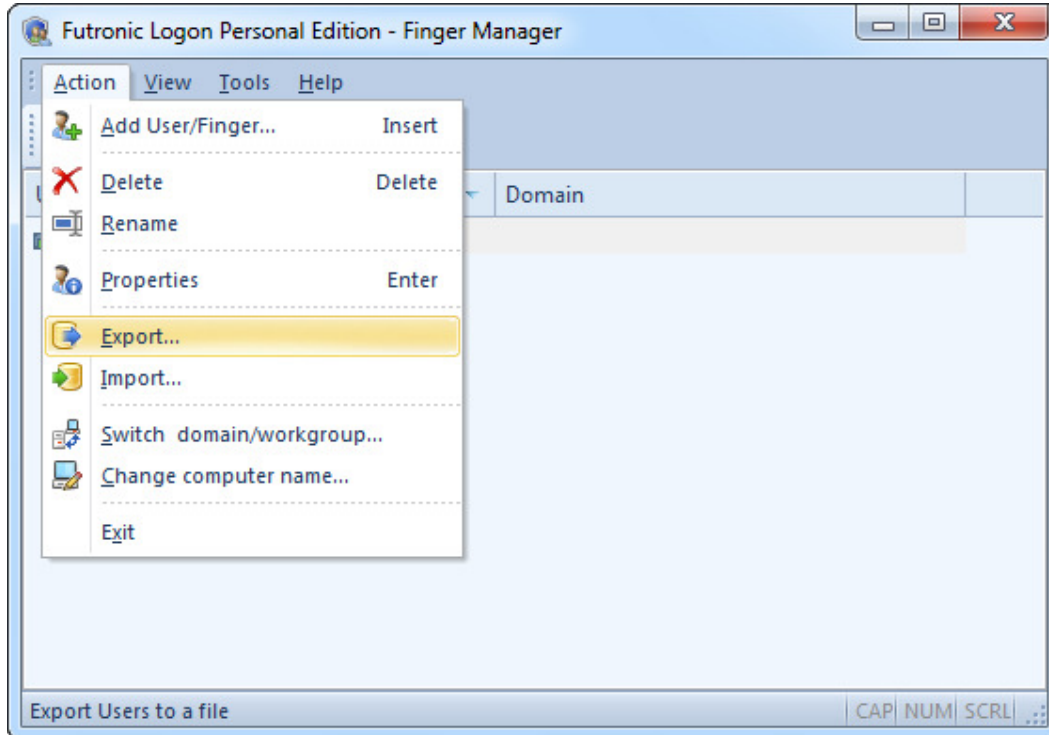
The request of Secure Password and Secure Fingerprint contains two tabs. Use the tab Finger to enter Secure Fingerprint or the tab Password to enter Secure Password.



Import and Export the user/ fingerprint database

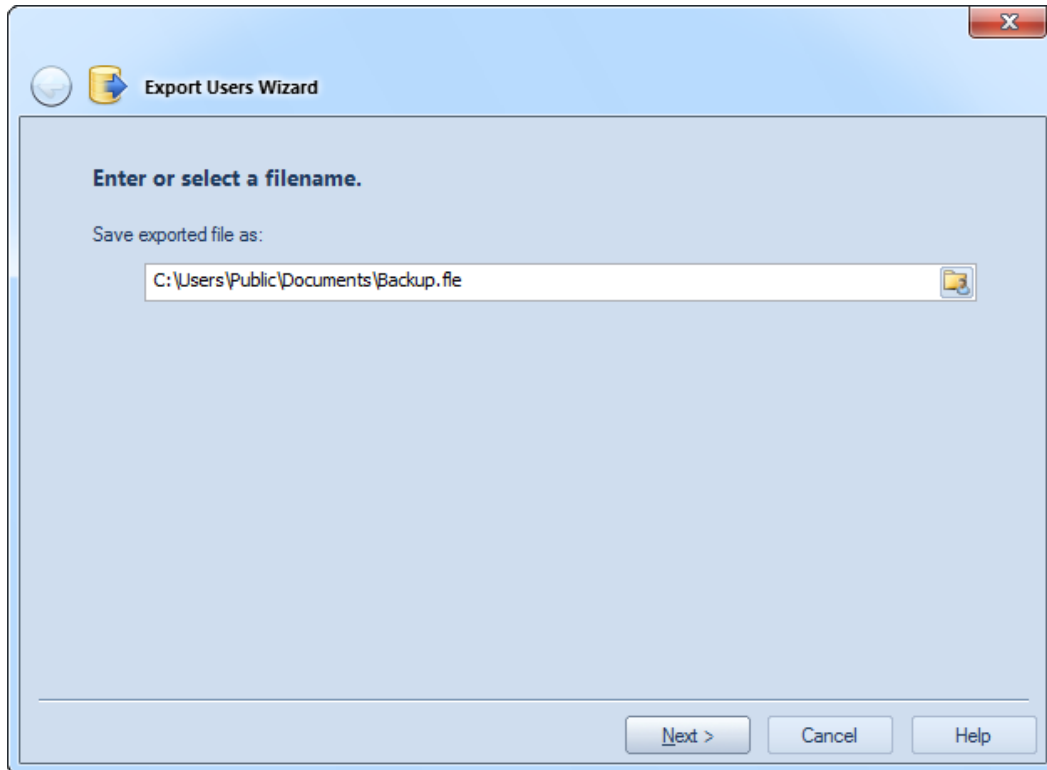
Import and export of the user/fingerprint database enables quick restoration, reinstallation or transfer to another system without re-registration of user/fingerprint. It is also highly recommended that the domain administrator to use the Export function to backup the user/fingerprint database from time to time.

To launch the procedure "**Import and Export**", please select the corresponding option in the menu "**Action**".

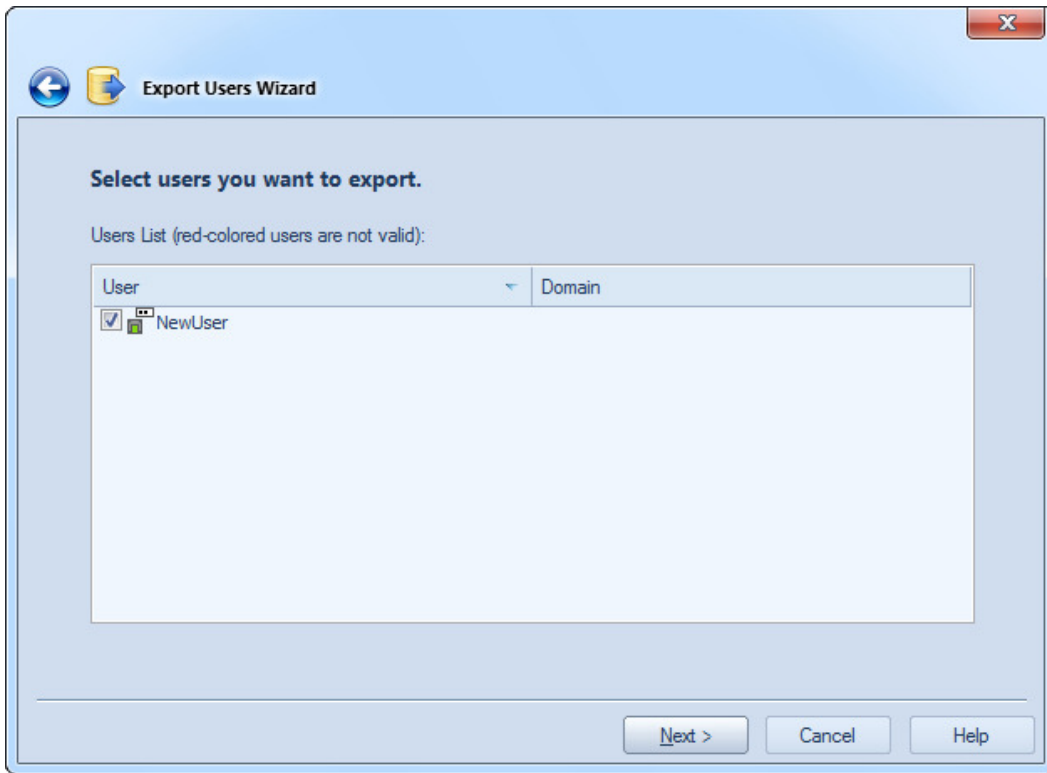


Export

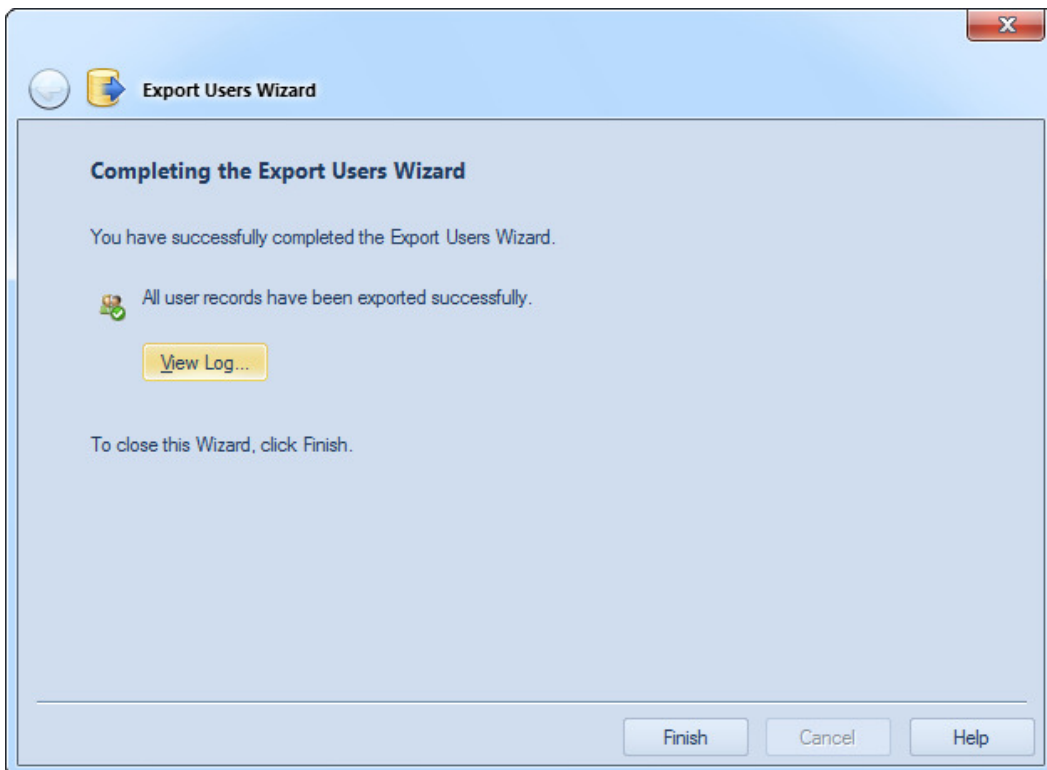
When exporting users/fingerprint, you should first select a file for saving users/fingerprint:



Then you'll be asked to select users that should be exported. All users will be exported by default. Not valid users are marked in red.



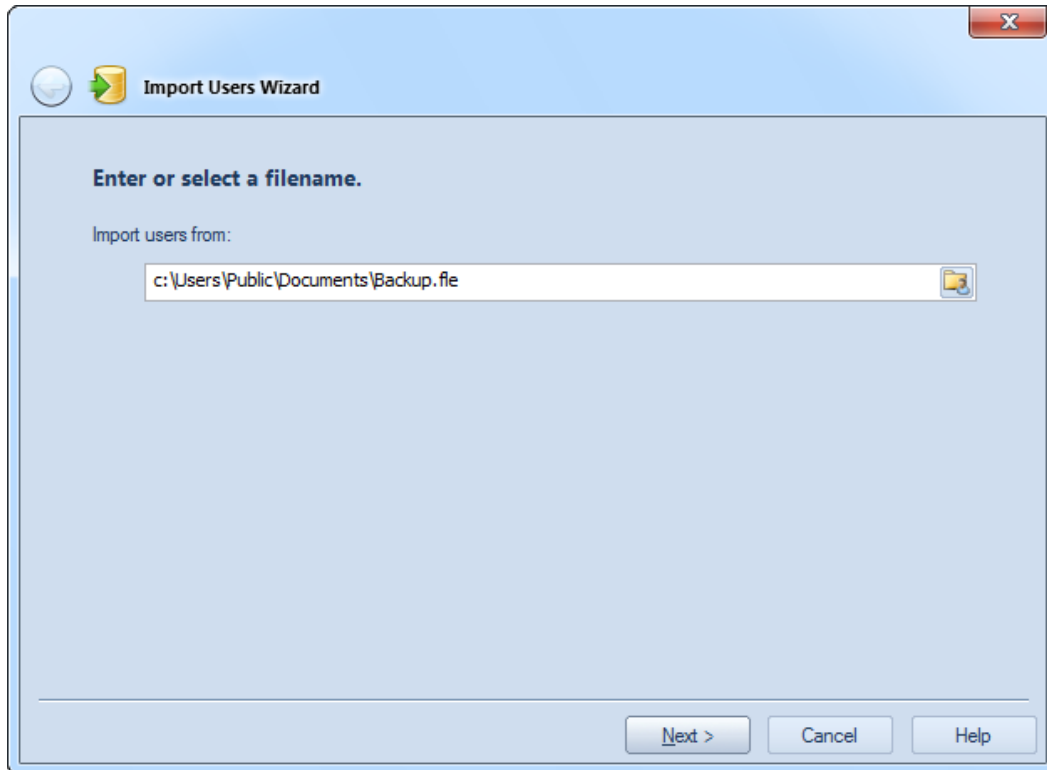
After the export file has been created, the Wizard will inform you about completion of the process and suggest displaying a report on results of the operation.



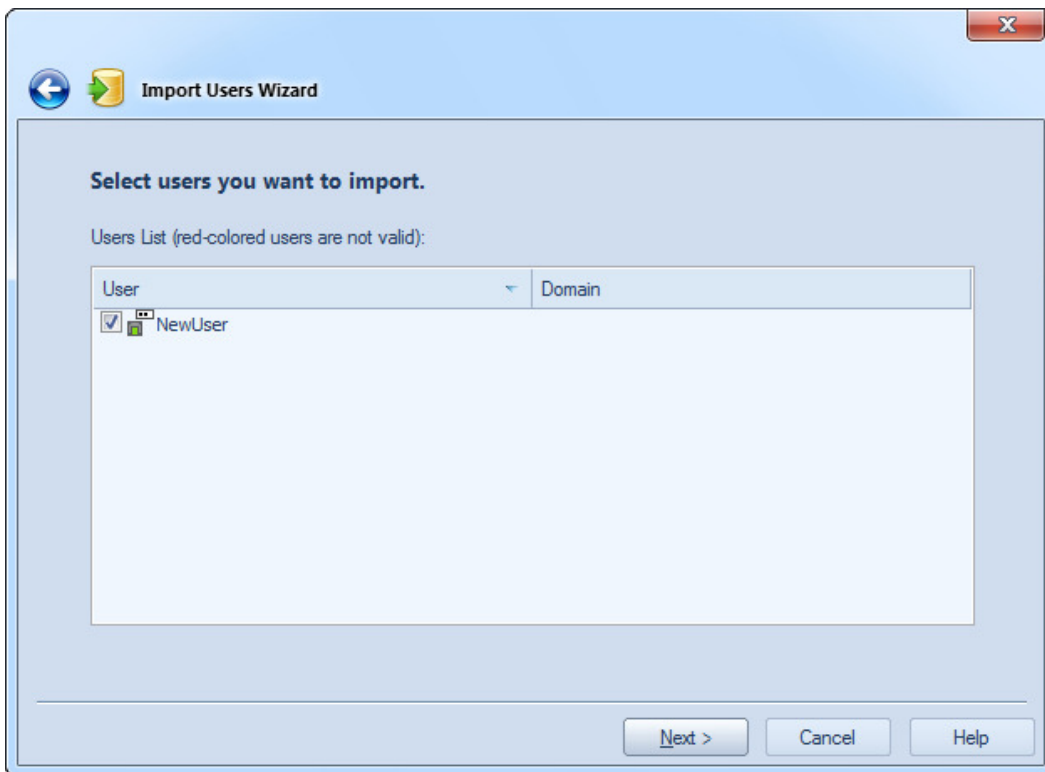
The reason why this or that user has not been exported will be indicated in the log.

Import

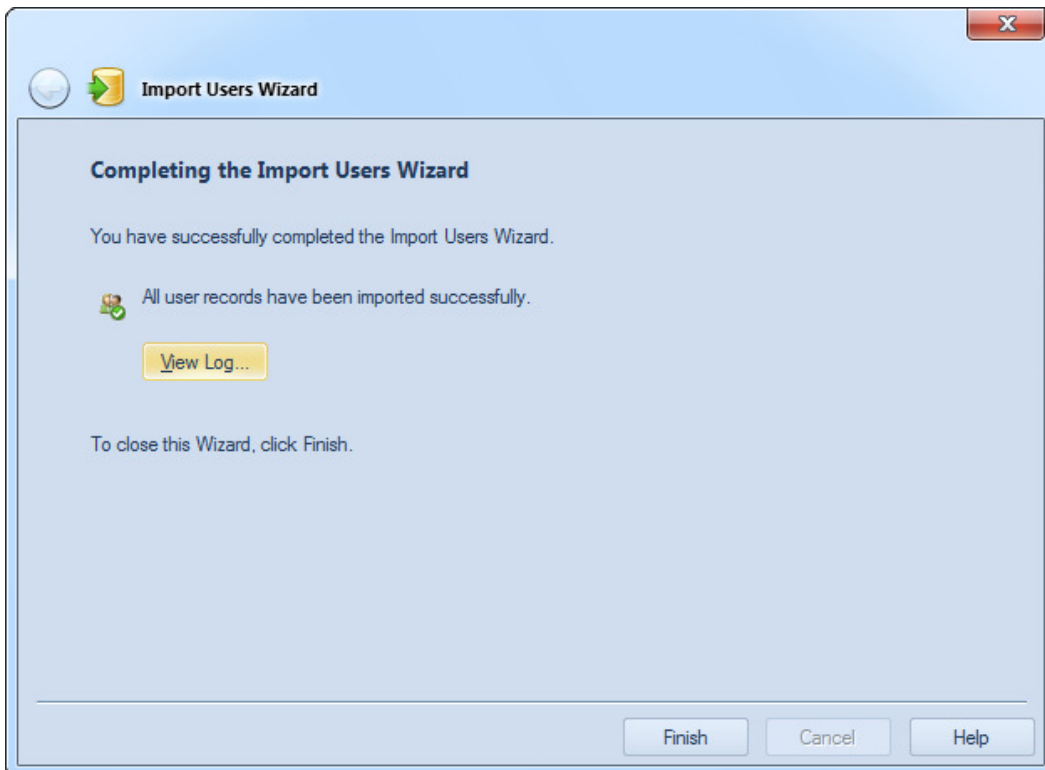
When you start importing, the Wizard will ask you to select a file with users/fingerprint.



Then the Wizard will show you the list of users stored in the archive and ask to select those users who should be imported into the system. All users/fingerprint will be imported by default. The users marked in red are not valid for the system. The most probable reason is that users are not in the list of Windows users.



When import is completed, the Wizard will suggest displaying a report on results of the operation.



The reason why this or that user has not been imported will be indicated in the error log.

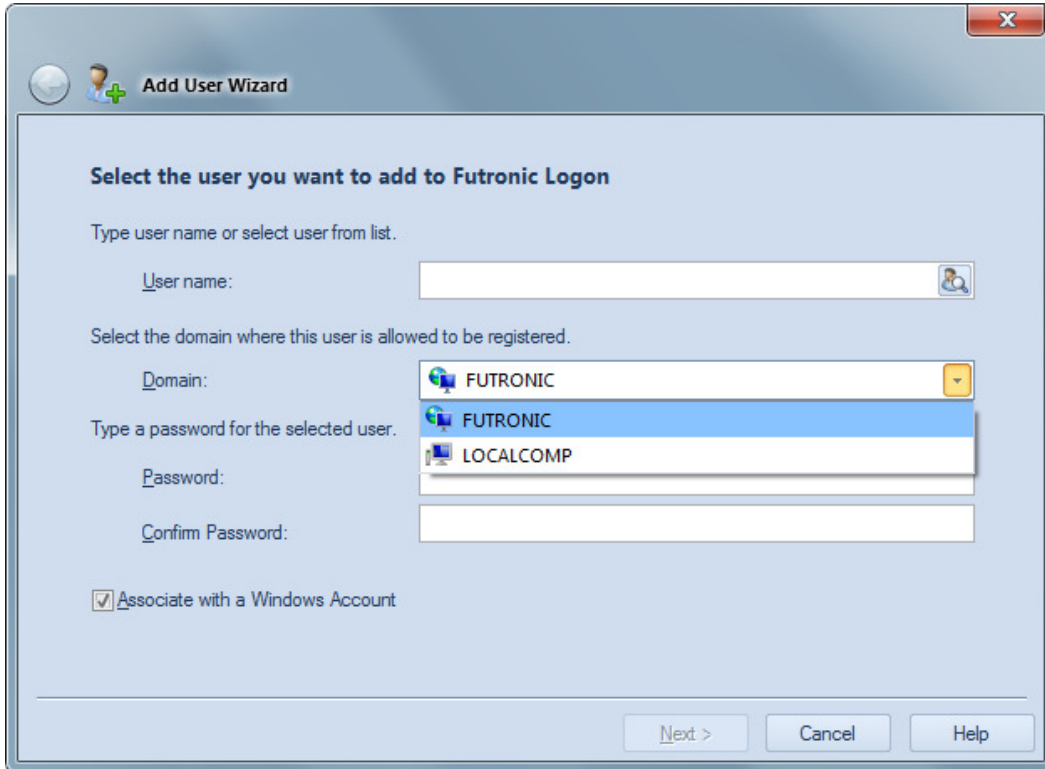
Please note that if the user you imported is already existed in the system, the import operation of this user will be skipped.

Domain User Logon

If your computer is connected to a domain controller, you can still use the Futronic Logon Personal Edition Software to logon the domain that your computer is connecting to. It is only necessary to select the right domain in the Add Finger/User Wizard. All other operation is the same as that of non-domain user.

Add Finger/User Wizard

If your computer is connected to a domain, a "Domain" pull-down list will appear in the middle of the following Wizard. You can select from the pull-down list to add finger/user to a domain or the local computer.



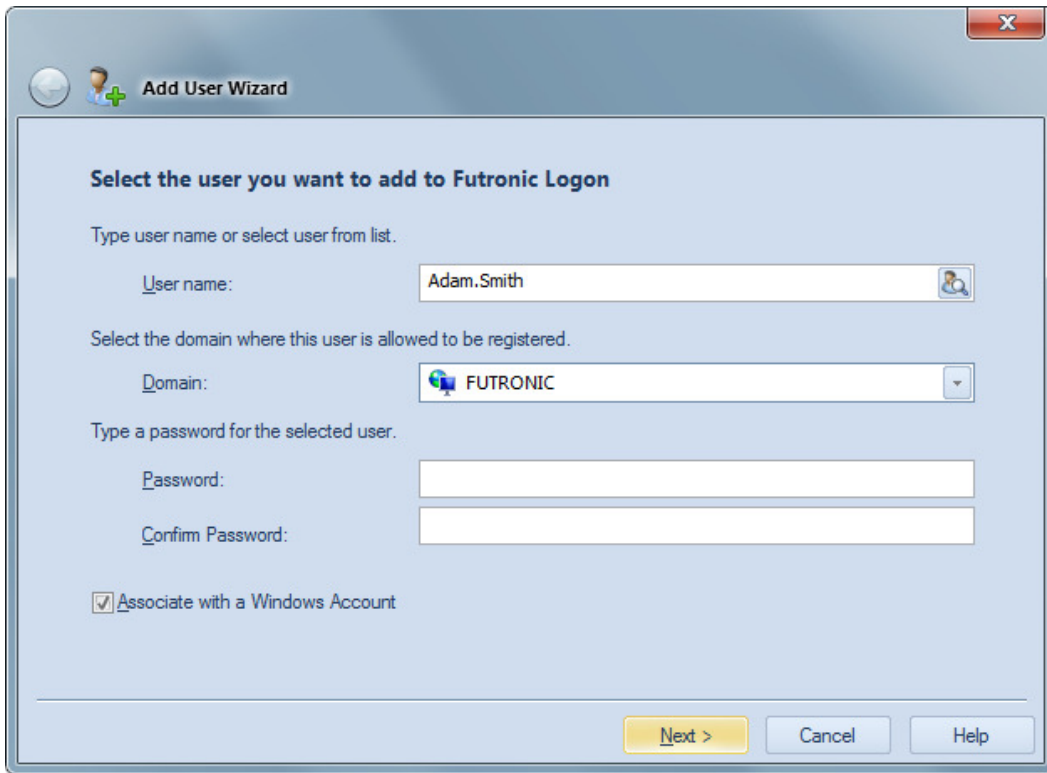
The screenshot shows the 'Add User Wizard' dialog box. The title bar contains a close button (X) and the text 'Add User Wizard'. The main content area has a heading 'Select the user you want to add to Futronic Logon'. Below the heading, there is a prompt 'Type user name or select user from list.' followed by a text input field labeled 'User name:'. Below that is another prompt 'Select the domain where this user is allowed to be registered.' followed by a dropdown menu labeled 'Domain:'. The dropdown menu is open, showing two options: 'FUTRONIC' (selected) and 'LOCALCOMP'. Below the dropdown is a text input field labeled 'Password:'. Below that is another text input field labeled 'Confirm Password:'. At the bottom left, there is a checked checkbox labeled 'Associate with a Windows Account'. At the bottom right, there are three buttons: 'Next >', 'Cancel', and 'Help'.

In the above Wizard, the "FUTRONIC" is a domain the computer is connecting to. "TECH" is the name of local computer. So you can select to add finger/user to a domain or your local computer. If you select the domain, please check with your system administrator to enter the correct domain user name and password.

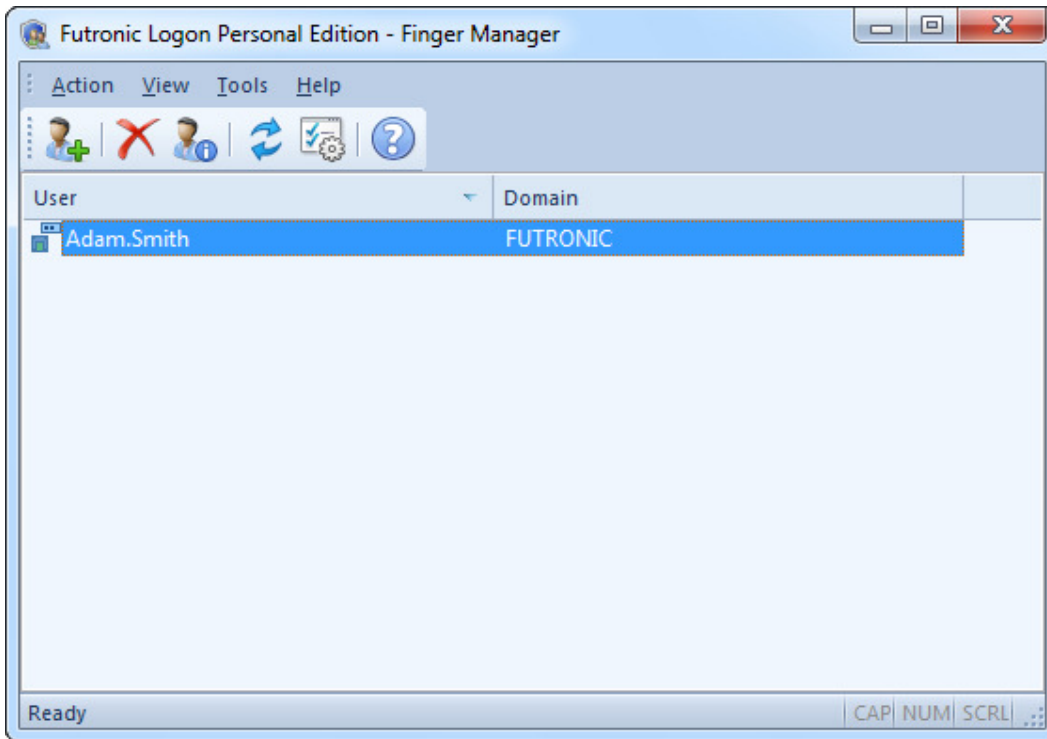
Please also note that a domain user cannot run the Finger Manager of Futronic Logon Software. Only the administrator of the local computer can run the Finger Manager.

If you add finger/user to a domain, **DON'T** click the "select from a list of Windows Account User" button at the top right hand corner of the wizard select the "Associate with a Windows Account" checkbox at the bottom of the wizard.

These 2 functions are for local computer user only. Please see the following.



After adding finger/user, the "Domain" property of the added finger/user will appear in the Finger Manager.



Logon Domain

At start up of computer, you will see the same Logon screen as before. If the finger(s) of domain user is already added, just place the particular finger on the fingerprint scanner, the user will logon his domain directly. If the finger(s) of a local computer administrator/user is already added, just place the particular finger on the fingerprint scanner, the user will logon local computer as administrator or limited user.

Windows XP view:



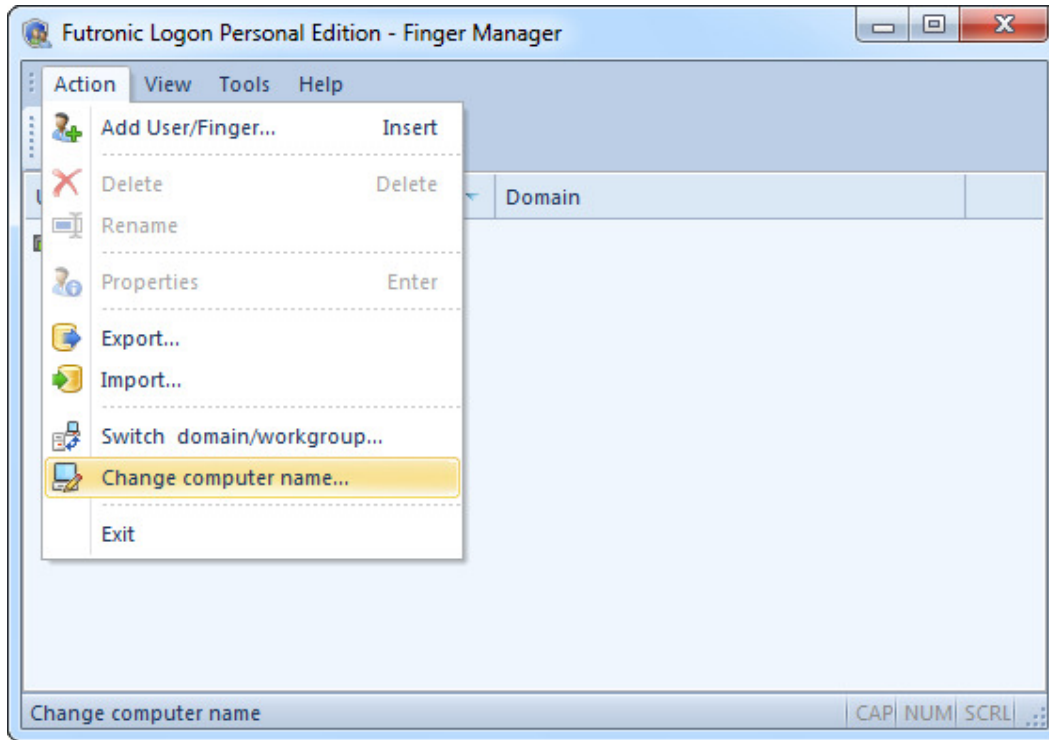
If you want to logon by using password, Press Ctrl-Alt-Del to get the "Log On to Windows" screen. But this time, at the bottom, there is a "Log on to" pull-down list so that you can select if you want to logon the domain or local computer by using username and password.

Switch domain/workgroup

There is a sub-menu "Switch domain/workgroup" under "Action". The local computer Administrator should run this function when first logon to Windows after join a domain from Workgroup or disconnect from a domain to join a workgroup. After doing this, all local computer users and domain users can use the same register finger(s) with the Add-on pack(the one touch password filler and fingerprint file encryption) after logon Windows.

Change computer name

There is a sub-menu "Change computer name" under "Action". The local computer Administrator should run this function when first logon to Windows after changing the local computer name. After doing this, all local computer users and domain users can use the same register finger(s) with the Add-on pack(the one touch password filler and fingerprint file encryption) after logon Windows.



Dial-Up Networking

Futronic Logon PE can interact with Dial-up networking.

“Log On to Windows” dialogue contains a check box indicating whether it is necessary to make Dial-up connection before entering the domain or not.

Windows XP view:



This check box is available only if the computer is included into the domain and has Dial-up or VPN connections. Otherwise, there will be no such check box in the dialogue window.

Besides, a similar check box can be provided in the first dialogue in order to enable entering the system by a fingerprint through switched and VPN connections.

Windows XP view:



In order to do that, you should make the following changes in the Windows registry:

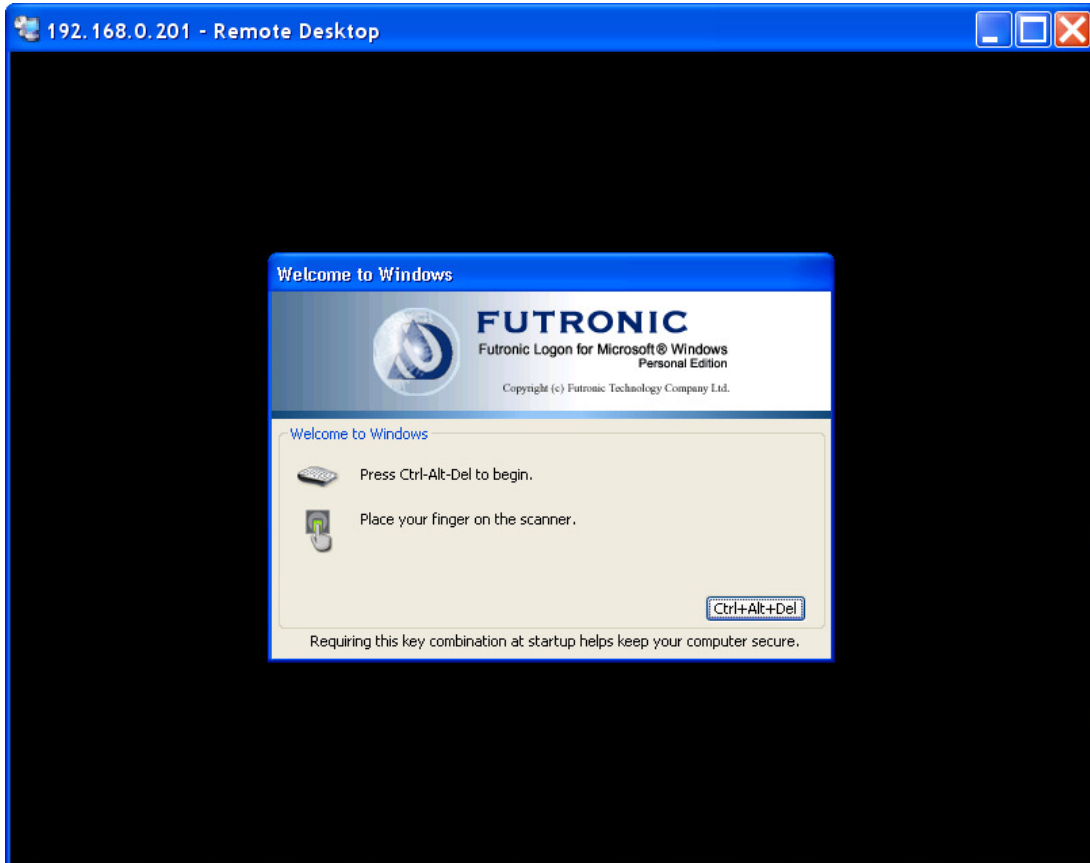
1. In the registry, add a value **EnableRAS** (REG_DWORD) to the following location.
HKEY_LOCAL_MACHINE\Software\Futronic\Logon
2. Set value EnableRAS as 1.
EnableRAS = 1

Note: If there are no connections created, the check box will not appear irrespective of the EnableRAS variable value.

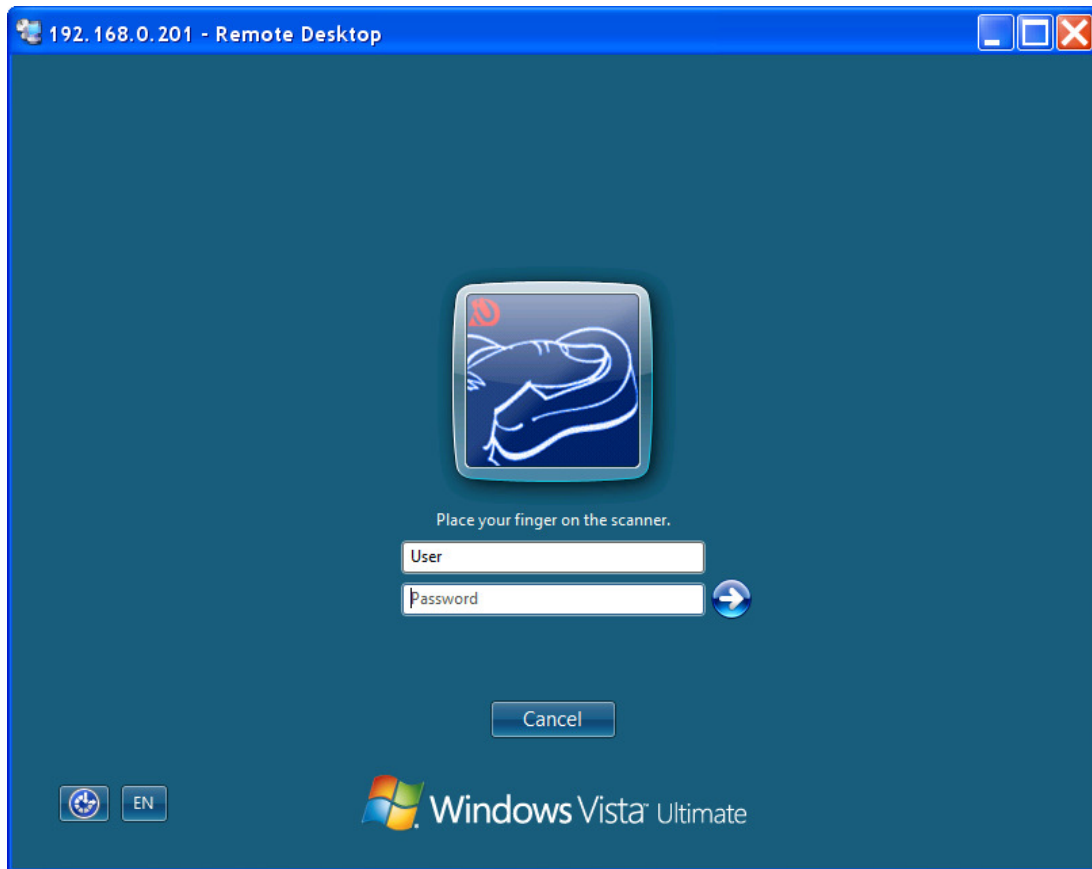
Terminal Services and Remote Desktop

Futronic Logon PE allows to use a fingerprint for authentication when working through the Terminal Server Client.

Windows XP view:



Windows Vista view:



In this case Futronic Logon PE should be installed in the system that is connected through the Terminal Server Client. On the client side it is enough that ftrScanAPI.dll v 4.1.0.1 or a major version be installed in the system folder \system32 and registered in the section Terminal Server Client in the Windows registry.

In order to register ftrScanAPI.dll, please do the following:

1) In the registry, add a subkey to one of the following locations.

HKEY_CURRENT_USER\Software\Microsoft\Terminal Server Client\Default\Addins

HKEY_CURRENT_USER\Software\Microsoft\Terminal Server Client\connection\Addins

Entries under the **\Default\Addins** key apply to all connections. Entries under the **\connection\Addins** key apply only to the connection identified by connection. Connections can be created and managed using Connection Manager.

The subkey can be given any name. It must contain a REG_SZ or REG_EXPAND_SZ value. The syntax of the REG_SZ or REG_EXPAND_SZ value is the following:

Name = ftrScanAPI.dll

If Name is a REG_EXPAND_SZ value, it can contain unexpanded environment variables that are expanded at runtime.

The value of DLLname can be a fully-qualified path. If DLLname does not contain a path, the standard DLL search strategy is used.

Note: Please remember that such a path should be in the registry for every user interested in this option.

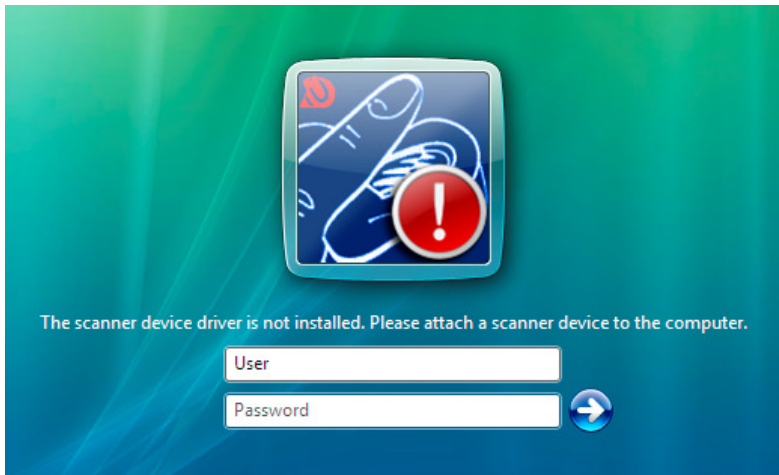
Troubleshooting

1. Problem: Welcome dialogue window detects that the scanner device is not installed.

Windows XP view:



Windows Vista view:



Make sure that the device is connected to the computer and is recognized by Windows. Then install the device driver.

2. Problem: I cannot register in the system with my fingerprint after changing the password.

There can be several reasons for that. For example, user's password was changed by the domain administrator or remotely.

To solve the problem load Finger Manager, which is included into the application kit, and set new user password.

3. When entering Windows, there is no dialogue window inviting to place a finger or press Ctrl+Alt+Del.

Make sure that you have not set the option "Disable Ctrl+Alt+Del". You can check it on the control panel in the section Users and passwords.

Or check the variable "disableCAD" in the register key *HKEY_LOCAL_MACHINE\SOFTWARE\Microsoft\Windows NT\CurrentVersion\Winlogon* and set it at zero if necessary.

Attention: operations with the registry should be performed only by users with sufficient qualification.

4. The product has difficulty identifying my finger.

Possible solutions:

1. The scanner surface is dirty and should be cleaned. Care after a biometric scanner is easy. It is enough to wipe the scanner screen with special tissue for cleaning scanners from time to time or when it gets dirty.
2. You might press your finger differently from the way you did during registration in the product base. Try another positions of the scanner on the table, choose the most convenient one and register in the base again.

5. After the user has been renamed in Windows, he will not be able to enter the system with his fingerprint.

Possible solutions:

If you have renamed the user in Windows, you should also rename him/her in Fultronic Logon Finger manager to restore the association.

6. I renamed a user in User Accounts of Windows XP Control Panel, and then renamed the user in Futronic Logon Finger Manager. This user is denied access to the system. What have I done wrong?

Possible solutions:

In Windows XP Control Panel you can rename user's full name, but not user's account. To rename an account, use the program Computer Management from the Administrative Tools in Control Panel.

Open Control Panel, choose Administrative Tools and run Computer Management. In this program choose "Local Users and Groups", and then "Users". Select a user, click the right button of the mouse and choose the option Rename.

